

Product datasheet for **TA335563**

WBP5 (TCEAL9) Rabbit Polyclonal Antibody

Product data:

Product Type:	Primary Antibodies
Applications:	WB
Recommended Dilution:	WB
Reactivity:	Human
Host:	Rabbit
Isotype:	IgG
Clonality:	Polyclonal
Immunogen:	The immunogen for Anti-WBP5 Antibody is: synthetic peptide directed towards the N-terminal region of Human WBP5. Synthetic peptide located within the following region: QKMEGKPENESEPKHEEHPKPEEKPEEEKLEEEAKAKGTFRERLIQSLQ
Formulation:	Liquid. Purified antibody supplied in 1x PBS buffer with 0.09% (w/v) sodium azide and 2% sucrose. <i>Note that this product is shipped as lyophilized powder to China customers.</i>
Purification:	Affinity Purified
Conjugation:	Unconjugated
Storage:	Store at -20°C as received.
Stability:	Stable for 12 months from date of receipt.
Predicted Protein Size:	13 kDa
Gene Name:	transcription elongation factor A like 9
Database Link:	NP_057387 Entrez Gene 51186 Human Q9UHQ7
Background:	The globular WW domain is composed of 38 to 40 semiconserved amino acids shared by proteins of diverse functions including structural, regulatory, and signaling proteins. The domain is involved in mediating protein-protein interactions through the binding of polyproline ligands. This gene encodes a WW domain binding protein. This gene also encodes a domain with similarity to the transcription elongation factor A, SII-related family. Alternative splicing results in multiple transcript variants encoding a single isoform.

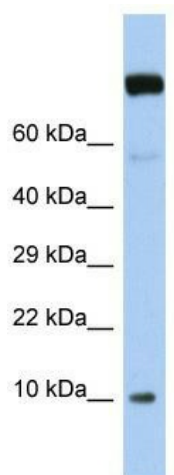


[View online »](#)

Synonyms: WBP5; WEX6

Note: Immunogen Sequence Homology: Human: 100%; Pig: 93%; Horse: 93%; Rat: 92%; Mouse: 92%; Guinea pig: 92%; Dog: 86%; Rabbit: 86%; Yeast: 85%; Bovine: 85%

Product images:



Host: Rabbit; Target Name: WBP5; Sample Tissue: Jurkat Whole Cell lysates; Antibody Dilution: 1.0 ug/ml