

## Product datasheet for **TA335562**

### **EPLIN (LIMA1) Rabbit Polyclonal Antibody**

#### **Product data:**

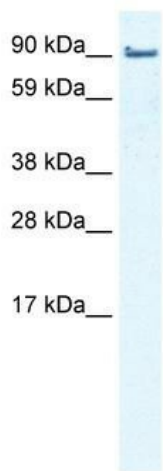
Product Type:	Primary Antibodies
Applications:	WB
Recommended Dilution:	WB
Reactivity:	Human
Host:	Rabbit
Isotype:	IgG
Clonality:	Polyclonal
Immunogen:	The immunogen for Anti-LIMA1 Antibody is: synthetic peptide directed towards the middle region of Human LIMA1. Synthetic peptide located within the following region: GVLAASMEAKASSQQEKEDKPAETKKLRIAWPPPELGSSEGSAL EEGIKM
Formulation:	Liquid. Purified antibody supplied in 1x PBS buffer with 0.09% (w/v) sodium azide and 2% sucrose. <i>Note that this product is shipped as lyophilized powder to China customers.</i>
Purification:	Affinity Purified
Conjugation:	Unconjugated
Storage:	Store at -20°C as received.
Stability:	Stable for 12 months from date of receipt.
Predicted Protein Size:	85 kDa
Gene Name:	LIM domain and actin binding 1
Database Link:	<a href="#">NP_057441</a> <a href="#">Entrez Gene 51474 Human</a> <a href="#">Q9UHB6</a>
Background:	This gene encodes a cytoskeleton-associated protein that inhibits actin filament depolymerization and cross-links filaments in bundles. It is downregulated in some cancer cell lines. Alternatively spliced transcript variants encoding different isoforms have been described for this gene, and expression of some of the variants maybe independently regulated.
Synonyms:	EPLIN; SREBP3



[View online »](#)

**Note:** Immunogen Sequence Homology: Human: 100%; Bovine: 100%; Dog: 93%; Pig: 93%; Rat: 93%; Horse: 93%; Guinea pig: 93%; Rabbit: 92%; Mouse: 86%

### Product images:



WB Suggested Anti-EPLIN Antibody Titration: 0.2-1 ug/ml; ELISA Titer: 1:12500; Positive Control: Human Placenta