

## Product datasheet for **TA335561**

### ISYNA1 Rabbit Polyclonal Antibody

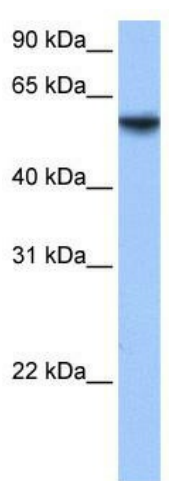
#### Product data:

Product Type:	Primary Antibodies
Applications:	WB
Recommended Dilution:	WB
Reactivity:	Human
Host:	Rabbit
Isotype:	IgG
Clonality:	Polyclonal
Immunogen:	The immunogen for Anti-ISYNA1 Antibody: synthetic peptide directed towards the N terminal of human ISYNA1. Synthetic peptide located within the following region: LQEQLWPHMEALRPRPSVYIPEFIAANQSARADNLIPGSRAQQLEQIRRD
Formulation:	Liquid. Purified antibody supplied in 1x PBS buffer with 0.09% (w/v) sodium azide and 2% sucrose. <i>Note that this product is shipped as lyophilized powder to China customers.</i>
Purification:	Affinity Purified
Conjugation:	Unconjugated
Storage:	Store at -20°C as received.
Stability:	Stable for 12 months from date of receipt.
Predicted Protein Size:	61 kDa
Gene Name:	inositol-3-phosphate synthase 1
Database Link:	<a href="#">NP_057452</a> <a href="#">Entrez Gene 51477 Human</a> <a href="#">Q9NPH2</a>



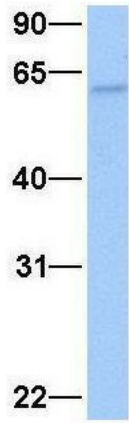
[View online »](#)

<b>Background:</b>	Myoinositol, the most common naturally occurring form of inositol, is a component of plasma membrane phospholipids and functions as a cell signaling molecule. ISYNA1 (EC 5.5.1.4), or IPS, is a rate-limiting enzyme that catalyzes the de novo synthesis of myoinositol 1-phosphate from glucose 6-phosphate. Myoinositol, the most common naturally occurring form of inositol, is a component of plasma membrane phospholipids and functions as a cell signaling molecule. ISYNA1 (EC 5.5.1.4), or IPS, is a rate-limiting enzyme that catalyzes the de novo synthesis of myoinositol 1-phosphate from glucose 6-phosphate (Seelan et al., 2004 [PubMed 15464731]). [supplied by OMIM]
<b>Synonyms:</b>	INO1; INOS; IPS; IPS-1; IPS 1
<b>Note:</b>	Immunogen Sequence Homology: Human: 100%; Pig: 93%; Guinea pig: 93%; Yeast: 92%; Rat: 86%; Horse: 86%; Mouse: 86%; Bovine: 86%
<b>Protein Families:</b>	Druggable Genome
<b>Protein Pathways:</b>	Inositol phosphate metabolism, Metabolic pathways

**Product images:**

WB Suggested Anti-ISYNA1 Antibody Titration:  
0.2-1 ug/ml; Positive Control: Human Lung

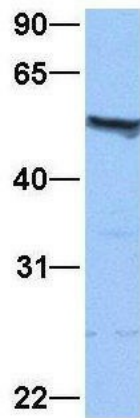
## ISYNA1



Rabbit Anti-ISYNA1  
Sample Type: Human Adult Placenta  
Antibody Concentration: 1ug/mL

Host: Rabbit; Target Name: ISYNA1; Sample Tissue: Human Adult Placenta; Antibody Dilution: 1.0 ug/ml

## ISYNA1



Rabbit Anti-ISYNA1  
Sample Type: Human HepG2  
Antibody Concentration: 1ug/mL

Host: Rabbit; Target Name: ISYNA1; Sample Tissue: HepG2; Antibody Dilution: 1.0 ug/ml. ISYNA1 is supported by BioGPS gene expression data to be expressed in HepG2