

Product datasheet for **TA335559**

RNF141 Rabbit Polyclonal Antibody

Product data:

Product Type:	Primary Antibodies
Applications:	IHC, WB
Recommended Dilution:	WB, IHC
Reactivity:	Human
Host:	Rabbit
Isotype:	IgG
Clonality:	Polyclonal
Immunogen:	The immunogen for Anti-RNF141 Antibody: synthetic peptide directed towards the middle region of human RNF141. Synthetic peptide located within the following region: RIMNLYQFIQLYKDITSQAAGVLAQSSTSEEPDENSSSVTSCQASLWMGR
Formulation:	Liquid. Purified antibody supplied in 1x PBS buffer with 0.09% (w/v) sodium azide and 2% sucrose.
Purification:	Affinity Purified
Conjugation:	Unconjugated
Storage:	Store at -20°C as received.
Stability:	Stable for 12 months from date of receipt.
Predicted Protein Size:	26 kDa
Gene Name:	ring finger protein 141
Database Link:	NP_057506 Entrez Gene 50862 Human Q8WVD5
Background:	The protein encoded by RNF141 contains a RING finger, a motif known to be involved in protein-DNA and protein-protein interactions. Abundant expression of this gene was found in the testicular tissue of fertile men, but was not detected in azoospermic patients. Studies of the mouse counterpart suggest that this gene may function as a testis specific transcription factor during spermatogenesis.
Synonyms:	ZFP26; ZNF230

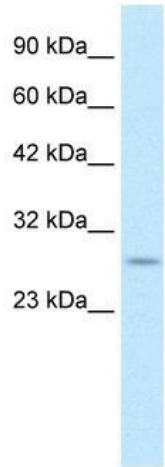


[View online »](#)

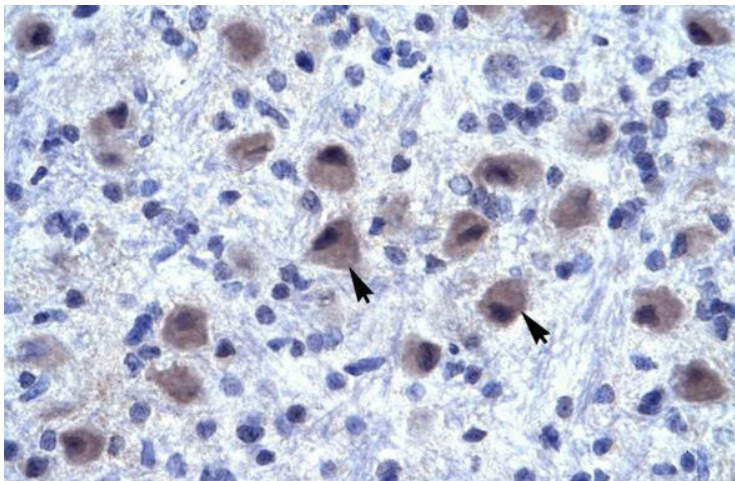
Note: Immunogen Sequence Homology: Human: 100%; Mouse: 100%; Dog: 93%; Pig: 93%; Rat: 93%; Guinea pig: 93%; Horse: 86%; Bovine: 86%; Rabbit: 85%

Protein Families: Druggable Genome, Transcription Factors

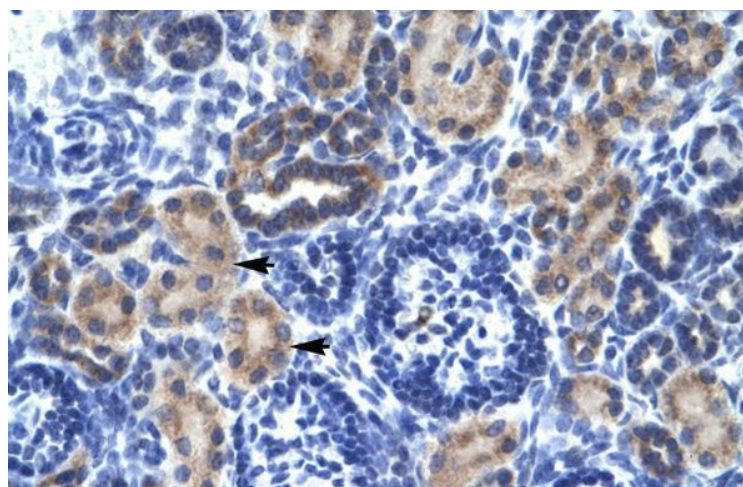
Product images:



WB Suggested Anti-RNF141 Antibody Titration:
0.2-1 ug/ml; ELISA Titer: 1:312500; Positive
Control: Jurkat cell lysate



Human Brain



Human kidney