

## Product datasheet for **TA335556**

### SPAG11B Rabbit Polyclonal Antibody

#### Product data:

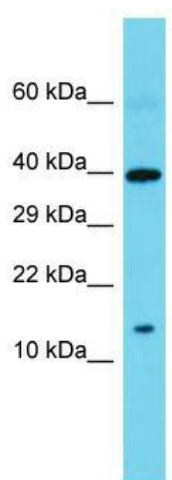
Product Type:	Primary Antibodies
Applications:	WB
Recommended Dilution:	WB
Reactivity:	Human
Host:	Rabbit
Isotype:	IgG
Clonality:	Polyclonal
Immunogen:	The immunogen for Anti-SPAG11B Antibody is: synthetic peptide directed towards the N-terminal region of Human SPAG11B. Synthetic peptide located within the following region: VALLFPGSSQARHVNHSATEALGELRERAPGQGTNGFQLLRHAVKRDLLP
Formulation:	Liquid. Purified antibody supplied in 1x PBS buffer with 0.09% (w/v) sodium azide and 2% sucrose. <i>Note that this product is shipped as lyophilized powder to China customers.</i>
Purification:	Affinity Purified
Conjugation:	Unconjugated
Storage:	Store at -20°C as received.
Stability:	Stable for 12 months from date of receipt.
Predicted Protein Size:	14 kDa
Gene Name:	sperm associated antigen 11B
Database Link:	<a href="#">NP_057596</a> <a href="#">Entrez Gene 10407 Human</a> <a href="#">Q6PDA7</a>
Background:	SPAG11B is one of several androgen-dependent, epididymis-specific secretory proteins. The specific functions of these proteins have not been determined, but they are thought to be involved in sperm maturation. Some of the isoforms contain regions of similarity to beta-defensins, a family of antimicrobial peptides.
Synonyms:	EDDM2B; EP2; EP2C; EP2D; HE2; HE2C; SPAG11
Note:	Immunogen Sequence Homology: Human: 100%



[View online »](#)

Protein Families: Secreted Protein

### Product images:



Host: Rabbit; Target Name: SPAG11B; Sample  
Tissue: Large Intestine Tumor lysates; Antibody  
Dilution: 1.0 ug/ml