

Product datasheet for **TA335553**

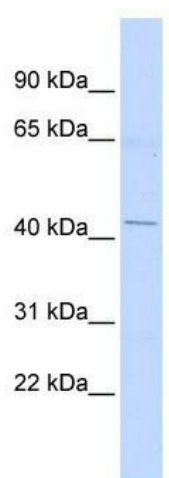
ERGIC2 Rabbit Polyclonal Antibody

Product data:

Product Type:	Primary Antibodies
Applications:	WB
Recommended Dilution:	WB
Reactivity:	Human
Host:	Rabbit
Isotype:	IgG
Clonality:	Polyclonal
Immunogen:	The immunogen for Anti-ERGIC2 Antibody: synthetic peptide directed towards the middle region of human ERGIC2. Synthetic peptide located within the following region: TVVPTKLHTYKISADTHQFSVTERERIINHAAGSHGVSGIFMKYDLSSLM
Formulation:	Liquid. Purified antibody supplied in 1x PBS buffer with 0.09% (w/v) sodium azide and 2% sucrose. <i>Note that this product is shipped as lyophilized powder to China customers.</i>
Purification:	Affinity Purified
Conjugation:	Unconjugated
Storage:	Store at -20°C as received.
Stability:	Stable for 12 months from date of receipt.
Predicted Protein Size:	42 kDa
Gene Name:	ERGIC and golgi 2
Database Link:	NP_057654 Entrez Gene 51290 Human Q96RQ1
Background:	ERGIC2 belongs to the ERGIC family. It possible play role in transport between endoplasmic reticulum and Golgi.
Synonyms:	cd002; CDA14; Erv41; PTX1
Note:	Immunogen Sequence Homology: Dog: 100%; Pig: 100%; Rat: 100%; Horse: 100%; Human: 100%; Mouse: 100%; Rabbit: 100%; Guinea pig: 100%; Bovine: 93%; Zebrafish: 79%



[View online »](#)

Product images:

WB Suggested Anti-ERGIC2 Antibody Titration:
0.2-1 ug/ml; ELISA Titer: 1:62500; Positive Control:
Human Lung