

Product datasheet for **TA335552**

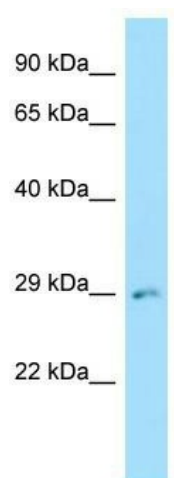
ERGIC2 Rabbit Polyclonal Antibody

Product data:

Product Type:	Primary Antibodies
Applications:	WB
Recommended Dilution:	WB
Reactivity:	Mouse
Host:	Rabbit
Isotype:	IgG
Clonality:	Polyclonal
Immunogen:	The immunogen for Anti-Ergic2 Antibody is: synthetic peptide directed towards the N-terminal region of Mouse Ergic2. Synthetic peptide located within the following region: MRRLNRRKTLSLVKELDAFPKVPDSYVETSASGGTVSLIAFTTMALLTIM
Formulation:	Liquid. Purified antibody supplied in 1x PBS buffer with 0.09% (w/v) sodium azide and 2% sucrose. <i>Note that this product is shipped as lyophilized powder to China customers.</i>
Purification:	Affinity Purified
Conjugation:	Unconjugated
Storage:	Store at -20°C as received.
Stability:	Stable for 12 months from date of receipt.
Predicted Protein Size:	34 kDa
Gene Name:	ERGIC and golgi 2
Database Link:	NP_057654 Entrez Gene 67456 Mouse Q96RQ1
Background:	Ergic2 play a possible role in transport between endoplasmic reticulum and Golgi.
Synonyms:	cd002; CDA14; Erv41; PTX1
Note:	Immunogen Sequence Homology: Dog: 100%; Pig: 100%; Rat: 100%; Human: 100%; Mouse: 100%; Bovine: 100%; Rabbit: 100%; Horse: 92%; Guinea pig: 92%



[View online »](#)

Product images:

Host: Rabbit; Target Name: Ergic2; Sample
Tissue: Mouse Muscle lysates; Antibody Dilution:
1.0 ug/ml