

Product datasheet for **TA335548**

KLHL3 Rabbit Polyclonal Antibody

Product data:

Product Type:	Primary Antibodies
Applications:	IHC, WB
Recommended Dilution:	WB, IHC
Reactivity:	Human
Host:	Rabbit
Isotype:	IgG
Clonality:	Polyclonal
Immunogen:	The immunogen for Anti-KLHL3 Antibody: synthetic peptide directed towards the N terminal of human KLHL3. Synthetic peptide located within the following region: CSPYFCAMFTGDMSESKAKKIEIKDVDGQTLKIDYIYTAEIEVTEENV
Formulation:	Liquid. Purified antibody supplied in 1x PBS buffer with 0.09% (w/v) sodium azide and 2% sucrose.
Purification:	Affinity Purified
Conjugation:	Unconjugated
Storage:	Store at -20°C as received.
Stability:	Stable for 12 months from date of receipt.
Predicted Protein Size:	65 kDa
Gene Name:	kelch like family member 3
Database Link:	NP_059111 Entrez Gene 26249 Human Q9UH77
Background:	KLHL3 protein contains a poxvirus and zinc finger domain at the N-terminus and six tandem repeats (kelch repeats) at the C-terminus. At the amino acid level, KLHL3 shares 77% similarity with Drosophila kelch and 89% similarity with Mayven (KLHL2), another human kelch homolog. At least three isoforms are produced and may be the result of alternative promoter usage. The KLHL3 maps within the smallest commonly deleted segment in myeloid leukemias characterized by a deletion of 5q; however, no inactivating mutations of KLHL3 could be detected in malignant myeloid disorders with loss of 5q.

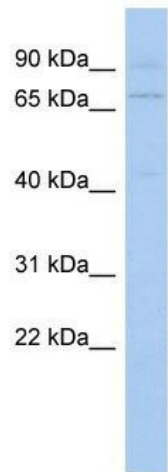


[View online »](#)

Synonyms: PHA2D

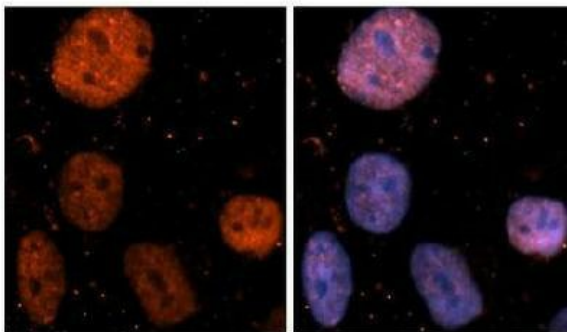
Note: Immunogen Sequence Homology: Pig: 100%; Rat: 100%; Horse: 100%; Human: 100%; Mouse: 100%; Bovine: 100%; Rabbit: 100%; Guinea pig: 100%; Dog: 86%; Zebrafish: 82%

Product images:



WB Suggested Anti-KLHL3 Antibody Titration: 0.2-1 ug/ml; ELISA Titer: 1:12500; Positive Control: THP-1 cell lysate

KLHL3



Antibody--RED
DAPI--Blue

Sample Type. Human brain stem cells. Primary Antibody Dilution. 1:500. Secondary Antibody. Goat anti-rabbit Alexa-Fluor 594Secondary Antibody Dilution. 1:1000Color/Signal Descriptions. KLHL3: Red DAPI:BlueGene Name. KLHL3Submitted by. Dr. Yuzhi Chen, University of Arkansas for Medical Science

See IHC 1 Data and Customer Feedback for more information