

Product datasheet for **TA335546**

SETD4 Rabbit Polyclonal Antibody

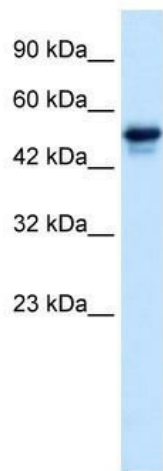
Product data:

Product Type:	Primary Antibodies
Applications:	WB
Recommended Dilution:	WB
Reactivity:	Human
Host:	Rabbit
Isotype:	IgG
Clonality:	Polyclonal
Immunogen:	The immunogen for Anti-C21ORF18 Antibody: synthetic peptide directed towards the C terminal of human C21ORF18. Synthetic peptide located within the following region: LTALKLLCLEAEKFTCWKKVLLGEVISDTNEKTSLDIAQKICYFIEETN
Formulation:	Liquid. Purified antibody supplied in 1x PBS buffer with 0.09% (w/v) sodium azide and 2% sucrose.
Purification:	Affinity Purified
Conjugation:	Unconjugated
Storage:	Store at -20°C as received.
Stability:	Stable for 12 months from date of receipt.
Predicted Protein Size:	50 kDa
Gene Name:	SET domain containing 4
Database Link:	NP_059134 Entrez Gene 54093 Human Q9NVD3
Background:	C21orf18, located on chromosome 21, is predicted to encode for a hypothetical protein.
Synonyms:	C21orf18; C21orf27
Note:	Immunogen Sequence Homology: Dog: 100%; Pig: 100%; Rat: 100%; Human: 100%; Mouse: 100%; Rabbit: 100%; Guinea pig: 100%; Horse: 93%; Bovine: 86%



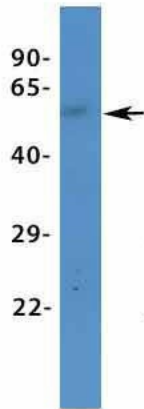
[View online »](#)

Product images:



WB Suggested Anti-C21ORF18 Antibody Titration:
0.2-1 ug/ml; ELISA Titer: 1:12500; Positive Control:
HepG2 cell lysate

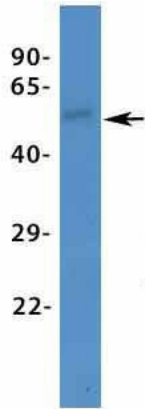
C21ORF18



Rabbit Anti-C21ORF18
Sample Type: Human Fetal
Muscle
Antibody Concentration: 1ug/mL

Host: Rabbit; Target Name: C21ORF18; Sample
Tissue: Human Fetal Muscle; Antibody Dilution:
1.0 ug/ml

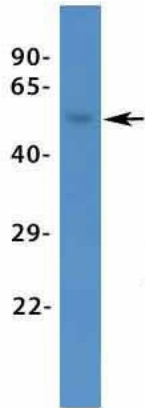
C21ORF18



Rabbit Anti-C21ORF18
Sample Type: Human Fetal Lung
Antibody Concentration: 1ug/mL

Host: Rabbit; Target Name: C21ORF18; Sample
Tissue: Human Fetal Lung; Antibody Dilution: 1.0
ug/ml

C21ORF18



Rabbit Anti-C21ORF18
Sample Type: Human Fetal Heart
Antibody Concentration: 1ug/mL

Host: Rabbit; Target Name: C21ORF18; Sample
Tissue: Human Fetal Heart; Antibody Dilution: 1.0
ug/ml