

Product datasheet for **TA335545**

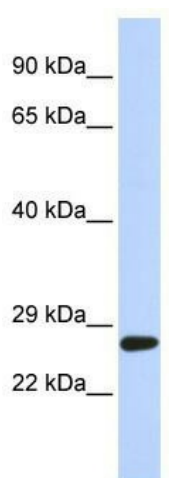
SETD4 Rabbit Polyclonal Antibody

Product data:

Product Type:	Primary Antibodies
Applications:	WB
Recommended Dilution:	WB
Reactivity:	Human
Host:	Rabbit
Isotype:	IgG
Clonality:	Polyclonal
Immunogen:	The immunogen for Anti-SETD4 Antibody: synthetic peptide directed towards the C terminal of human SETD4. Synthetic peptide located within the following region: VQVKAAFNEETHSYEIRTTSRWRKHEEVFICYGPHDNQRLFLEYGFVSVH
Formulation:	Liquid. Purified antibody supplied in 1x PBS buffer with 0.09% (w/v) sodium azide and 2% sucrose.
Purification:	Affinity Purified
Conjugation:	Unconjugated
Storage:	Store at -20°C as received.
Stability:	Stable for 12 months from date of receipt.
Predicted Protein Size:	32 kDa
Gene Name:	SET domain containing 4
Database Link:	NP_059134 Entrez Gene 54093 Human Q9NVD3
Background:	SETD4 contains 1 SET domain. The exact function of SETD4 is not known.
Synonyms:	C21orf18; C21orf27
Note:	Immunogen Sequence Homology: Human: 100%; Pig: 86%; Rat: 86%; Bovine: 86%; Guinea pig: 86%; Dog: 80%; Mouse: 79%; Rabbit: 79%



[View online »](#)

Product images:

WB Suggested Anti-SETD4 Antibody Titration: 0.2-1 ug/ml; ELISA Titer: 1:312500; Positive Control: 721_B cell lysate. SETD4 is strongly supported by BioGPS gene expression data to be expressed in Human 721_B cells