

Product datasheet for **TA335544**

Cytohesin 2 (CYTH2) Rabbit Polyclonal Antibody

Product data:

Product Type:	Primary Antibodies
Applications:	WB
Recommended Dilution:	WB
Reactivity:	Human
Host:	Rabbit
Isotype:	IgG
Clonality:	Polyclonal
Immunogen:	The immunogen for Anti-CYTH2 Antibody is: synthetic peptide directed towards the C-terminal region of Human CYTH2. Synthetic peptide located within the following region: GRVKTWKRRWFILTDNCLYFYEYTTDKPRGIIPLENLSIREVDDPRKPN
Formulation:	Liquid. Purified antibody supplied in 1x PBS buffer with 0.09% (w/v) sodium azide and 2% sucrose. <i>Note that this product is shipped as lyophilized powder to China customers.</i>
Purification:	Affinity Purified
Conjugation:	Unconjugated
Storage:	Store at -20°C as received.
Stability:	Stable for 12 months from date of receipt.
Predicted Protein Size:	46 kDa
Gene Name:	cytohesin 2
Database Link:	NP_059431 Entrez Gene 9266 Human Q99418



[View online »](#)

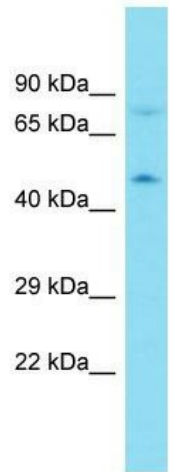
Background: The protein encoded by this gene is a member of the PSCD family. Members of this family have identical structural organization that consists of an N-terminal coiled-coil motif, a central Sec7 domain, and a C-terminal pleckstrin homology (PH) domain. The coiled-coil motif is involved in homodimerization, the Sec7 domain contains guanine-nucleotide exchange protein (GEP) activity, and the PH domain interacts with phospholipids and is responsible for association of PSCDs with membranes. Members of this family appear to mediate the regulation of protein sorting and membrane trafficking. The encoded protein exhibits GEP activity in vitro with ARF1, ARF3, and ARF6 and is 83% homologous to CYTH1. Two transcript variants encoding different isoforms have been found for this gene.

Synonyms: ARNO; CTS18; CTS18.1; cytohesin-2; PSCD2; PSCD2L; SEC7L; Sec7p-L; Sec7p-like

Note: Immunogen Sequence Homology: Dog: 100%; Pig: 100%; Rat: 100%; Horse: 100%; Human: 100%; Mouse: 100%; Sheep: 100%; Bovine: 100%; Rabbit: 100%; Zebrafish: 100%; Guinea pig: 100%

Protein Families: Druggable Genome

Product images:



Host: Rabbit; Target Name: CYTH2; Sample Tissue: MDA-MB-435S Whole Cell lysates; Antibody Dilution: 1.0 ug/ml