

Product datasheet for **TA335542**

ApoER2 (LRP8) Rabbit Polyclonal Antibody

Product data:

Product Type:	Primary Antibodies
Applications:	IHC, WB
Recommended Dilution:	WB, IHC
Reactivity:	Human
Host:	Rabbit
Isotype:	IgG
Clonality:	Polyclonal
Immunogen:	The immunogen for Anti-LRP8 Antibody: synthetic peptide directed towards the middle region of human LRP8. Synthetic peptide located within the following region: ATVDGGRRRTLFSRNLSEPRAIIVDPLRGFMYSWSDWGDQAKIEKSGNLNGV
Formulation:	Liquid. Purified antibody supplied in 1x PBS buffer with 0.09% (w/v) sodium azide and 2% sucrose. <i>Note that this product is shipped as lyophilized powder to China customers.</i>
Purification:	Affinity Purified
Conjugation:	Unconjugated
Storage:	Store at -20°C as received.
Stability:	Stable for 12 months from date of receipt.
Predicted Protein Size:	74 kDa
Gene Name:	LDL receptor related protein 8
Database Link:	NP_059992 Entrez Gene 7804 Human Q14114



[View online »](#)

Background:

LRP8 is an apolipoprotein E receptor, a member of the low density lipoprotein receptor (LDLR) family. Apolipoprotein E is a small lipophilic plasma protein and a component of lipoproteins such as chylomicron remnants, very low density lipoprotein (VLDL), and high density lipoprotein (HDL). The apolipoprotein E receptor is involved in cellular recognition and internalization of these lipoproteins. This gene encodes an apolipoprotein E receptor, a member of the low density lipoprotein receptor (LDLR) family. Apolipoprotein E is a small lipophilic plasma protein and a component of lipoproteins such as chylomicron remnants, very low density lipoprotein (VLDL), and high density lipoprotein (HDL). The apolipoprotein E receptor is involved in cellular recognition and internalization of these lipoproteins. Alternative splicing generates multiple transcript variants encoding distinct isoforms for this gene.

Synonyms:

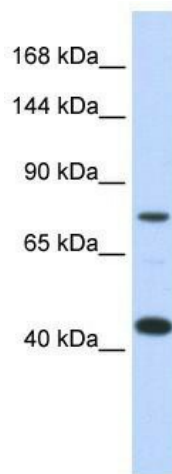
APOER2; HSZ75190; LRP-8; MCI1

Note:

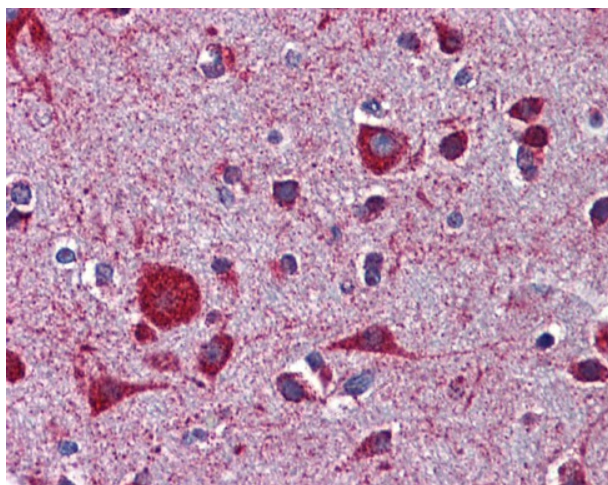
Immunogen Sequence Homology: Dog: 100%; Pig: 100%; Rat: 100%; Human: 100%; Mouse: 100%; Sheep: 100%; Rabbit: 100%; Guinea pig: 100%; Horse: 93%; Bovine: 93%; Zebrafish: 85%

Protein Families:

Druggable Genome, Secreted Protein, Transmembrane

Product images:

WB Suggested Anti-LRP8 Antibody Titration: 0.2-1 ug/ml; ELISA Titer: 1: 1562500; Positive Control: Transfected 293T



Anti-LRP8 antibody IHC staining of human brain, cortex. Immunohistochemistry of formalin-fixed, paraffin-embedded tissue after heat-induced antigen retrieval. Antibody concentration 5 ug/ml.