

Product datasheet for **TA335541**

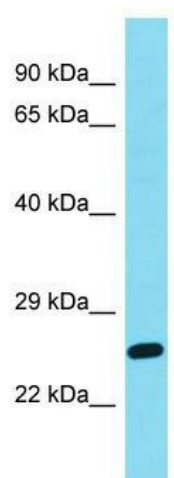
DIRAS2 Rabbit Polyclonal Antibody

Product data:

Product Type:	Primary Antibodies
Applications:	WB
Recommended Dilution:	WB
Reactivity:	Human
Host:	Rabbit
Isotype:	IgG
Clonality:	Polyclonal
Immunogen:	The immunogen for Anti-DIRAS2 Antibody is: synthetic peptide directed towards the C-terminal region of Human DIRAS2. Synthetic peptide located within the following region: TSAKLNHNVKELFQELLNLEKRRTVSLQIDGKSKQQRKEKLKGKCVIM
Formulation:	Liquid. Purified antibody supplied in 1x PBS buffer with 0.09% (w/v) sodium azide and 2% sucrose. <i>Note that this product is shipped as lyophilized powder to China customers.</i>
Purification:	Affinity Purified
Conjugation:	Unconjugated
Storage:	Store at -20°C as received.
Stability:	Stable for 12 months from date of receipt.
Predicted Protein Size:	22 kDa
Gene Name:	DIRAS family GTPase 2
Database Link:	NP_060064 Entrez Gene 54769 Human Q96HU8
Background:	DIRAS2 belongs to a distinct branch of the functionally diverse Ras superfamily of monomeric GTPases.
Synonyms:	Di-Ras2
Note:	Immunogen Sequence Homology: Dog: 100%; Pig: 100%; Rat: 100%; Horse: 100%; Human: 100%; Mouse: 100%; Bovine: 100%; Rabbit: 100%; Guinea pig: 100%; Zebrafish: 93%



[View online »](#)

Product images:

Host: Rabbit; Target Name: DIRAS2; Sample
Tissue: Jurkat Whole Cell lysates; Antibody
Dilution: 1.0 ug/ml