

Product datasheet for **TA335539**

TENT5C Rabbit Polyclonal Antibody

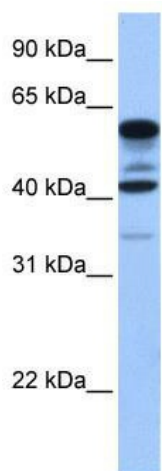
Product data:

Product Type:	Primary Antibodies
Applications:	WB
Recommended Dilution:	WB
Reactivity:	Human
Host:	Rabbit
Isotype:	IgG
Clonality:	Polyclonal
Immunogen:	The immunogen for Anti-FAM46C Antibody: synthetic peptide directed towards the middle region of human FAM46C. Synthetic peptide located within the following region: LIATKNPEEIRGGGLLKYSNLLVRDFRPTDQEEIKTLERYMCSRFFIDFP
Formulation:	Liquid. Purified antibody supplied in 1x PBS buffer with 0.09% (w/v) sodium azide and 2% sucrose. <i>Note that this product is shipped as lyophilized powder to China customers.</i>
Purification:	Affinity Purified
Conjugation:	Unconjugated
Storage:	Store at -20°C as received.
Stability:	Stable for 12 months from date of receipt.
Predicted Protein Size:	43 kDa
Gene Name:	family with sequence similarity 46 member C
Database Link:	NP_060179 Entrez Gene 54855 Human Q5VWP2
Background:	FAM46C belongs to the FAM46 family. The exact function of FAM46C remains unknown.
Synonyms:	FLJ20202
Note:	Immunogen Sequence Homology: Dog: 100%; Pig: 100%; Rat: 100%; Horse: 100%; Human: 100%; Rabbit: 100%; Guinea pig: 100%; Mouse: 93%; Bovine: 93%



[View online »](#)

Product images:



WB Suggested Anti-FAM46C Antibody Titration:
0.2-1 ug/ml; Positive Control: Human heart