

## Product datasheet for **TA335536**

### BTBD2 Rabbit Polyclonal Antibody

#### Product data:

Product Type:	Primary Antibodies
Applications:	WB
Recommended Dilution:	WB
Reactivity:	Human
Host:	Rabbit
Isotype:	IgG
Clonality:	Polyclonal
Immunogen:	The immunogen for Anti-BTBD2 Antibody: synthetic peptide directed towards the N terminal of human BTBD2. Synthetic peptide located within the following region: AFLFNNEVLCDVHFLVGKGLSSQRIPAHRFVLAVGSAVFDAMFNGGMATT
Formulation:	Liquid. Purified antibody supplied in 1x PBS buffer with 0.09% (w/v) sodium azide and 2% sucrose.
Purification:	Affinity Purified
Conjugation:	Unconjugated
Storage:	Store at -20°C as received.
Stability:	Stable for 12 months from date of receipt.
Predicted Protein Size:	56 kDa
Gene Name:	BTB domain containing 2
Database Link:	<a href="#">NP_060267</a> <a href="#">Entrez Gene 55643 Human</a> <a href="#">Q9BX70</a>



[View online »](#)

**Background:**

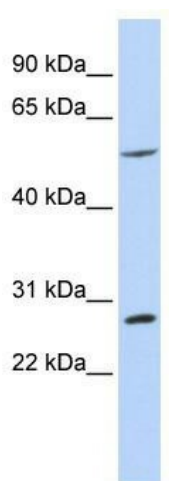
The C-terminus of BTBD2 binds topoisomerase I. The N-terminus contains a proline-rich region and a BTB/POZ domain (broad-complex, Tramtrack and bric a brac/Pox virus and Zinc finger), both of which are typically involved in protein-protein interactions. Subcellularly, the protein localizes to cytoplasmic bodies. The C-terminus of the protein encoded by this gene binds topoisomerase I. The N-terminus contains a proline-rich region and a BTB/POZ domain (broad-complex, Tramtrack and bric a brac/Pox virus and Zinc finger), both of which are typically involved in protein-protein interactions. Subcellularly, the protein localizes to cytoplasmic bodies.

**Synonyms:**

BTB (POZ) domain containing 2; FLJ20386

**Note:**

Immunogen Sequence Homology: Rat: 100%; Human: 100%; Mouse: 100%; Zebrafish: 90%; Bovine: 86%

**Product images:**


WB Suggested Anti-BTBD2 Antibody Titration:  
0.2-1 ug/ml; ELISA Titer: 1:62500; Positive Control:  
MCF7 cell lysate