

## Product datasheet for **TA335535**

### **C14orf101 (TMEM260) Rabbit Polyclonal Antibody**

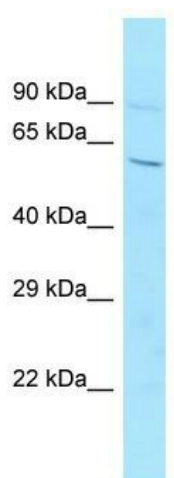
#### **Product data:**

<b>Product Type:</b>	Primary Antibodies
<b>Applications:</b>	WB
<b>Recommended Dilution:</b>	WB
<b>Reactivity:</b>	Mouse
<b>Host:</b>	Rabbit
<b>Isotype:</b>	IgG
<b>Clonality:</b>	Polyclonal
<b>Immunogen:</b>	The immunogen for Anti-6720456H20Rik Antibody is: synthetic peptide directed towards the middle region of Mouse 6720456H20Rik. Synthetic peptide located within the following region: LFRLLKEKELTSLLLRLTLAFSAGLLPYVYLPVSSYLSRARWTWGDQTT
<b>Formulation:</b>	Liquid. Purified antibody supplied in 1x PBS buffer with 0.09% (w/v) sodium azide and 2% sucrose. <i>Note that this product is shipped as lyophilized powder to China customers.</i>
<b>Purification:</b>	Affinity Purified
<b>Conjugation:</b>	Unconjugated
<b>Storage:</b>	Store at -20°C as received.
<b>Stability:</b>	Stable for 12 months from date of receipt.
<b>Predicted Protein Size:</b>	63 kDa
<b>Gene Name:</b>	transmembrane protein 260
<b>Database Link:</b>	<a href="#">NP_060269</a> <a href="#">Entrez Gene 218989 Mouse</a> <a href="#">Q9NX78</a>
<b>Background:</b>	The function of this protein remains unknown.
<b>Synonyms:</b>	C14orf101
<b>Note:</b>	Immunogen Sequence Homology: Human: 100%; Dog: 86%; Pig: 86%; Rat: 86%; Horse: 86%; Mouse: 86%; Rabbit: 86%; Bovine: 79%; Yeast: 75%
<b>Protein Families:</b>	Transmembrane



[View online »](#)

## Product images:



Host: Rabbit; Target Name: 6720456H20Rik;  
Sample Tissue: Mouse Testis lysates; Antibody  
Dilution: 1.0 ug/ml