

Product datasheet for **TA335534**

C14orf101 (TMEM260) Rabbit Polyclonal Antibody

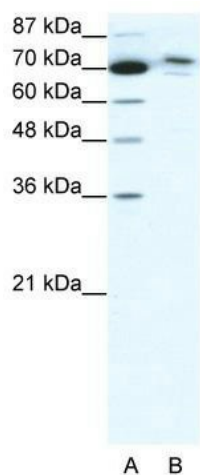
Product data:

Product Type:	Primary Antibodies
Applications:	WB
Recommended Dilution:	WB
Reactivity:	Human
Host:	Rabbit
Isotype:	IgG
Clonality:	Polyclonal
Immunogen:	The immunogen for Anti-C14ORF101 Antibody: synthetic peptide directed towards the N terminal of human C14ORF101. Synthetic peptide located within the following region: WGDQTTLQGFLTHFLREEYGTFLAKSEIGSSMSEILLSQVTNMRTLSF
Formulation:	Liquid. Purified antibody supplied in 1x PBS buffer with 0.09% (w/v) sodium azide and 2% sucrose. <i>Note that this product is shipped as lyophilized powder to China customers.</i>
Purification:	Affinity Purified
Conjugation:	Unconjugated
Storage:	Store at -20°C as received.
Stability:	Stable for 12 months from date of receipt.
Predicted Protein Size:	79 kDa
Gene Name:	transmembrane protein 260
Database Link:	NP_060269 Entrez Gene 54916 Human Q9NX78
Background:	C14orf101 is a protein predicted based on an ORF found in chromosome 14.
Synonyms:	C14orf101
Note:	Immunogen Sequence Homology: Human: 100%; Dog: 93%; Pig: 93%; Rat: 93%; Horse: 93%; Bovine: 93%; Guinea pig: 93%; Mouse: 92%; Rabbit: 86%
Protein Families:	Transmembrane



[View online »](#)

Product images:



WB Suggested Anti-C14ORF101 Antibody
Titration: 0.125 ug/ml; ELISA Titer: 1:12500;
Positive Control: HepG2 cell lysate