

Product datasheet for TA335533

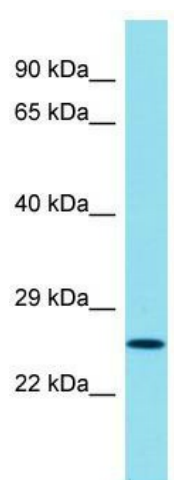
CXorf48 (CT55) Rabbit Polyclonal Antibody

Product data:

Product Type:	Primary Antibodies
Applications:	WB
Recommended Dilution:	WB
Reactivity:	Human
Host:	Rabbit
Isotype:	IgG
Clonality:	Polyclonal
Immunogen:	The immunogen for Anti-CXorf48 Antibody is: synthetic peptide directed towards the N-terminal region of Human CXorf48. Synthetic peptide located within the following region: ALAFYGR TADPAERQGPQQQLPQGDTQLTTVQGVVTSFCGDYGMIDESI
Formulation:	Liquid. Purified antibody supplied in 1x PBS buffer with 0.09% (w/v) sodium azide and 2% sucrose. <i>Note that this product is shipped as lyophilized powder to China customers.</i>
Purification:	Affinity Purified
Conjugation:	Unconjugated
Storage:	Store at -20°C as received.
Stability:	Stable for 12 months from date of receipt.
Predicted Protein Size:	26 kDa
Gene Name:	cancer/testis antigen 55
Database Link:	NP_060333 Entrez Gene 54967 Human Q8WUE5
Background:	The function of this protein remains unknown.
Synonyms:	BJHCC20A; CXorf48
Note:	Immunogen Sequence Homology: Human: 100%



[View online »](#)

Product images:

Host: Rabbit; Target Name: CXorf48; Sample Tissue: HT1080 Whole Cell lysates; Antibody Dilution: 1.0 ug/ml. CXorf48 is supported by BioGPS gene expression data to be expressed in HT1080