

## Product datasheet for **TA335532**

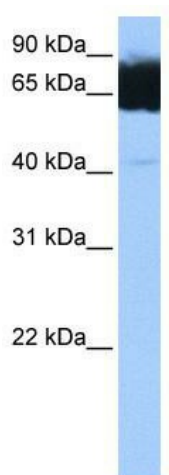
### TTC12 Rabbit Polyclonal Antibody

#### Product data:

Product Type:	Primary Antibodies
Applications:	WB
Recommended Dilution:	WB
Reactivity:	Human
Host:	Rabbit
Isotype:	IgG
Clonality:	Polyclonal
Immunogen:	The immunogen for Anti-TTC12 Antibody: synthetic peptide directed towards the C terminal of human TTC12. Synthetic peptide located within the following region: MNLCLQAPFVSEWAVEVSRRLSLLNSQDGGILTRAAGVLSRTLSSSLK
Formulation:	Liquid. Purified antibody supplied in 1x PBS buffer with 0.09% (w/v) sodium azide and 2% sucrose. <i>Note that this product is shipped as lyophilized powder to China customers.</i>
Purification:	Affinity Purified
Conjugation:	Unconjugated
Storage:	Store at -20°C as received.
Stability:	Stable for 12 months from date of receipt.
Predicted Protein Size:	81 kDa
Gene Name:	tetratricopeptide repeat domain 12
Database Link:	<a href="#">NP_060338</a> <a href="#">Entrez Gene 54970 Human</a> <a href="#">Q9H892</a>
Background:	TTC12 contains 3 TPR repeats. Hypermethylation of TTC12 gene may play a role in acute lymphoblastic leukemia. Haplotypic variants in DRD2, ANKK1, TTC12, and NCAM1 are associated with comorbid alcohol and drug dependence.
Synonyms:	TPARM
Note:	Immunogen Sequence Homology: Dog: 100%; Pig: 100%; Rat: 100%; Horse: 100%; Human: 100%; Bovine: 100%; Rabbit: 100%; Guinea pig: 100%; Mouse: 93%



[View online »](#)

**Product images:**

WB Suggested Anti-TTC12 Antibody Titration: 0.2-1 ug/ml; Positive Control: Human Muscle