

Product datasheet for **TA335530**

C2orf42 Rabbit Polyclonal Antibody

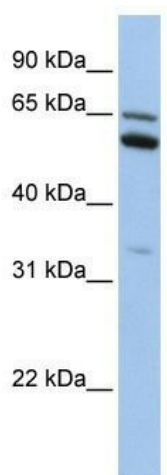
Product data:

Product Type:	Primary Antibodies
Applications:	WB
Recommended Dilution:	WB
Reactivity:	Human
Host:	Rabbit
Isotype:	IgG
Clonality:	Polyclonal
Immunogen:	The immunogen for Anti-C2orf42 Antibody: synthetic peptide directed towards the N terminal of human C2orf42. Synthetic peptide located within the following region: EPNSLRTKVPAFLSDLGKATLRGIRKPCRCGTYNGTRGLSCKNKTCGTIF
Formulation:	Liquid. Purified antibody supplied in 1x PBS buffer with 0.09% (w/v) sodium azide and 2% sucrose. <i>Note that this product is shipped as lyophilized powder to China customers.</i>
Purification:	Affinity Purified
Conjugation:	Unconjugated
Storage:	Store at -20°C as received.
Stability:	Stable for 12 months from date of receipt.
Predicted Protein Size:	63 kDa
Gene Name:	chromosome 2 open reading frame 42
Database Link:	NP_060350 Entrez Gene 54980 Human Q9NWW7
Background:	The exact function of C2orf42 remains unknown.
Synonyms:	FLJ20558
Note:	Immunogen Sequence Homology: Dog: 100%; Pig: 100%; Rat: 100%; Horse: 100%; Human: 100%; Mouse: 100%; Bovine: 100%; Rabbit: 100%; Guinea pig: 100%; Zebrafish: 93%
Protein Families:	Druggable Genome



[View online »](#)

Product images:



WB Suggested Anti-C2orf42 Antibody Titration:
0.2-1 ug/ml; Positive Control: HepG2 cell lysate