

Product datasheet for **TA335529**

ATG16L1 Rabbit Polyclonal Antibody

Product data:

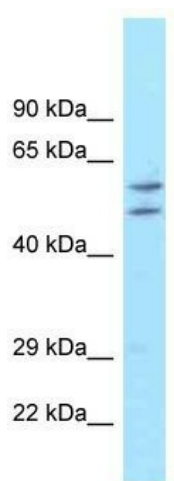
Product Type:	Primary Antibodies
Applications:	WB
Recommended Dilution:	WB
Reactivity:	Human
Host:	Rabbit
Isotype:	IgG
Clonality:	Polyclonal
Immunogen:	The immunogen for Anti-ATG16L1 Antibody: synthetic peptide directed towards the middle region of human ATG16L1. Synthetic peptide located within the following region: RRQARLQKELAEAAKEPLPVEQDDDIEVIVDETSDHTEETSPVRAISRAA
Formulation:	Liquid. Purified antibody supplied in 1x PBS buffer with 0.09% (w/v) sodium azide and 2% sucrose. <i>Note that this product is shipped as lyophilized powder to China customers.</i>
Purification:	Affinity Purified
Conjugation:	Unconjugated
Storage:	Store at -20°C as received.
Stability:	Stable for 12 months from date of receipt.
Predicted Protein Size:	66 kDa
Gene Name:	autophagy related 16 like 1
Database Link:	NP_060444 Entrez Gene 55054 Human Q676U5
Background:	Autophagy is the major intracellular degradation system delivering cytoplasmic components to lysosomes, and it accounts for degradation of most long-lived proteins and some organelles. Cytoplasmic constituents, including organelles, are sequestered into double-membraned autophagosomes, which subsequently fuse with lysosomes. ATG16L1 is a component of a large protein complex essential for autophagy.
Synonyms:	APG16L; ATG16A; ATG16L; IBD10; WDR30



[View online »](#)

Note: Immunogen Sequence Homology: Pig: 100%; Rat: 100%; Human: 100%; Mouse: 100%; Guinea pig: 100%; Dog: 93%; Rabbit: 93%; Horse: 86%; Bovine: 86%

Product images:



WB Suggested Anti-ATG16L1 Antibody Titration:
0.2-1 ug/ml; ELISA Titer: 1: 500; Positive Control:
Hela cell lysate