

## Product datasheet for **TA335527**

### MANSC1 Rabbit Polyclonal Antibody

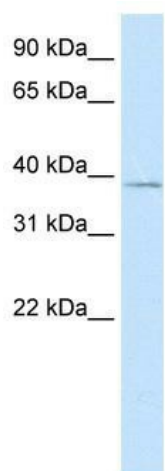
#### Product data:

Product Type:	Primary Antibodies
Applications:	IHC, WB
Recommended Dilution:	WB, IHC
Reactivity:	Human
Host:	Rabbit
Isotype:	IgG
Clonality:	Polyclonal
Immunogen:	The immunogen for Anti-MANSC1 Antibody: synthetic peptide directed towards the N terminal of human MANSC1. Synthetic peptide located within the following region: LTLRLSASQNCLKKSLEDWIDIQSSLSKGIRGNPEVYTSTQEDCINSCC
Formulation:	Liquid. Purified antibody supplied in 1x PBS buffer with 0.09% (w/v) sodium azide and 2% sucrose.
Purification:	Protein A purified
Conjugation:	Unconjugated
Storage:	Store at -20°C as received.
Stability:	Stable for 12 months from date of receipt.
Predicted Protein Size:	47 kDa
Gene Name:	MANSC domain containing 1
Database Link:	<a href="#">NP_060520</a> <a href="#">Entrez Gene 54682 Human Q9H8J5</a>
Background:	MANSC1, located on chromosome 12, encodes a protein whose function is not yet defined.
Synonyms:	9130403P13Rik; LOH12CR3
Note:	Immunogen Sequence Homology: Human: 100%; Horse: 92%; Dog: 90%; Rat: 90%; Mouse: 90%; Bovine: 83%; Rabbit: 79%
Protein Families:	Transmembrane

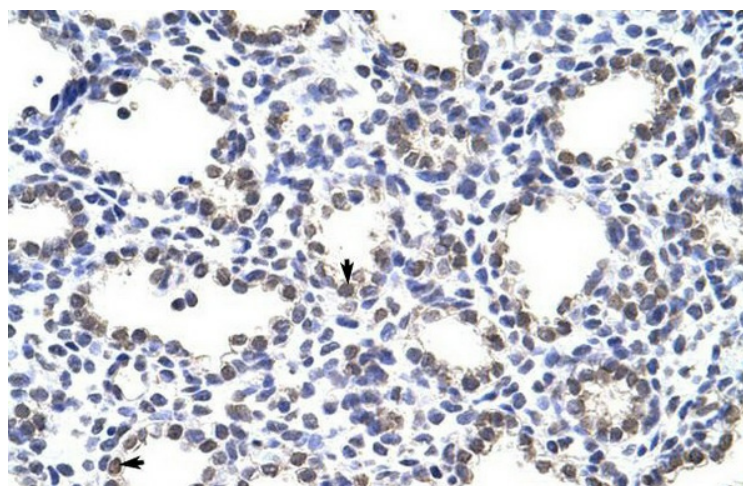


[View online »](#)

## Product images:



WB Suggested Anti-MANSC1 Antibody Titration: 5.0 ug/ml; Positive Control: Fetal kidney lysate



Human Lung