

## Product datasheet for **TA335525**

### TRIM68 Rabbit Polyclonal Antibody

#### Product data:

Product Type:	Primary Antibodies
Applications:	IHC, WB
Recommended Dilution:	WB, IHC
Reactivity:	Human
Host:	Rabbit
Isotype:	IgG
Clonality:	Polyclonal
Immunogen:	The immunogen for Anti-TRIM68 Antibody: synthetic peptide directed towards the middle region of human TRIM68. Synthetic peptide located within the following region: EPISLELKTDCRVLGLREILKTYAADVRLDPDTAYSRLIVSEDRKRVHYG
Formulation:	Liquid. Purified antibody supplied in 1x PBS buffer with 0.09% (w/v) sodium azide and 2% sucrose.
Purification:	Affinity Purified
Conjugation:	Unconjugated
Storage:	Store at -20°C as received.
Stability:	Stable for 12 months from date of receipt.
Predicted Protein Size:	56 kDa
Gene Name:	tripartite motif containing 68
Database Link:	<a href="#">NP_060543</a> <a href="#">Entrez Gene 55128 Human</a> <a href="#">Q6AZZ1</a>
Background:	The protein encoded by the TRIM68 gene contains a RING finger domain, a motif present in a variety of functionally distinct proteins and known to be involved in protein-protein and protein-DNA interactions. TRIM68 is expressed in many cancer cell lines. Its expression in normal tissues, however, was found to be restricted to prostate. This gene was also found to be differentially expressed in androgen-dependent versus androgen-independent prostate cancer cells.
Synonyms:	GC109; RNF137; SS-56; SS56

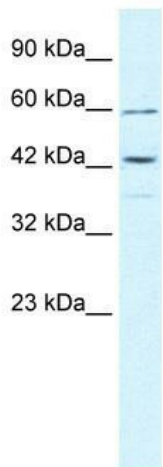


[View online »](#)

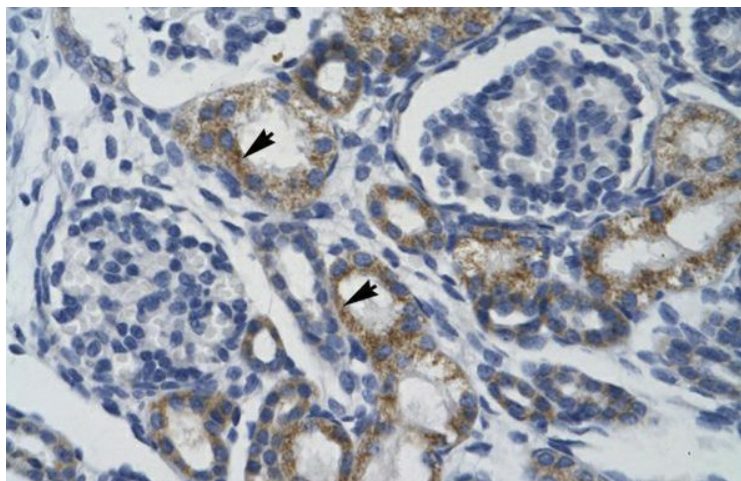
**Note:** Immunogen Sequence Homology: Dog: 100%; Human: 100%; Bovine: 100%; Pig: 93%; Horse: 93%; Rat: 86%; Mouse: 86%; Zebrafish: 83%; Rabbit: 77%; Guinea pig: 77%

**Protein Families:** Druggable Genome

**Product images:**



WB Suggested Anti-TRIM68 Antibody Titration:  
0.2-1 ug/ml; ELISA Titer: 1:62500; Positive Control:  
DU145 cell lysate



Human kidney