

Product datasheet for **TA335523**

EFHC1 Rabbit Polyclonal Antibody

Product data:

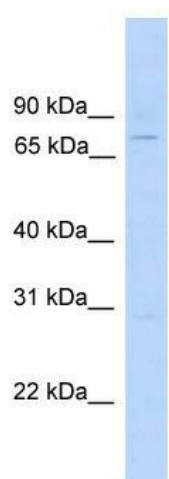
Product Type:	Primary Antibodies
Applications:	WB
Recommended Dilution:	WB
Reactivity:	Human
Host:	Rabbit
Isotype:	IgG
Clonality:	Polyclonal
Immunogen:	The immunogen for Anti-EFHC1 Antibody: synthetic peptide directed towards the N terminal of human EFHC1. Synthetic peptide located within the following region: SYRNGYAIARRRPTVGIGGDRQLQFNQLSQAELDELASKAPVLTYGQPKQAP
Formulation:	Liquid. Purified antibody supplied in 1x PBS buffer with 0.09% (w/v) sodium azide and 2% sucrose. <i>Note that this product is shipped as lyophilized powder to China customers.</i>
Purification:	Affinity Purified
Conjugation:	Unconjugated
Storage:	Store at -20°C as received.
Stability:	Stable for 12 months from date of receipt.
Predicted Protein Size:	70 kDa
Gene Name:	EF-hand domain containing 1
Database Link:	NP_060570 Entrez Gene 114327 Human Q5JVL4
Background:	This gene encodes an EF-hand-containing calcium binding protein. The encoded protein likely plays a role in calcium homeostasis. Mutations in this gene have been associated with susceptibility to juvenile myoclonic epilepsy and juvenile absence epilepsy. Alternatively spliced transcript variants have been described.
Synonyms:	dj304B14.2; EJM1



[View online »](#)

Note: Immunogen Sequence Homology: Human: 100%; Pig: 93%; Rabbit: 93%; Guinea pig: 93%; Dog: 86%; Horse: 86%; Mouse: 86%; Bovine: 86%; Rat: 79%

Product images:



WB Suggested Anti-EFHC1 Antibody Titration: 0.2-1 ug/ml; ELISA Titer: 1: 62500; Positive Control: Human kidney