

Product datasheet for **TA335522**

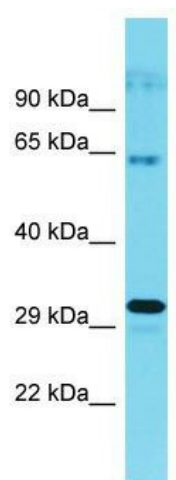
CWF19L1 Rabbit Polyclonal Antibody

Product data:

Product Type:	Primary Antibodies
Applications:	WB
Recommended Dilution:	WB
Reactivity:	Human
Host:	Rabbit
Isotype:	IgG
Clonality:	Polyclonal
Immunogen:	The immunogen for Anti-CWF19L1 Antibody is: synthetic peptide directed towards the N-terminal region of Human CWF19L1. Synthetic peptide located within the following region: ENPYRKSGQEASIGKQILAPVEESACQFFFDLNEKQGRKRSSTGRDSKSS
Formulation:	Liquid. Purified antibody supplied in 1x PBS buffer with 0.09% (w/v) sodium azide and 2% sucrose. <i>Note that this product is shipped as lyophilized powder to China customers.</i>
Purification:	Affinity Purified
Conjugation:	Unconjugated
Storage:	Store at -20°C as received.
Stability:	Stable for 12 months from date of receipt.
Predicted Protein Size:	32 kDa
Gene Name:	CWF19-like 1, cell cycle control (S. pombe)
Database Link:	NP_060764 Entrez Gene 55280 Human Q69YN2
Background:	The function of this protein remains unknown.
Synonyms:	C19L1; hDrn1; SCAR17
Note:	Immunogen Sequence Homology: Dog: 100%; Pig: 100%; Rat: 100%; Human: 100%; Bovine: 100%; Rabbit: 100%; Horse: 93%; Guinea pig: 93%; Mouse: 86%



[View online »](#)

Product images:

Host: Rabbit; Target Name: CWF19L1; Sample
Tissue: HeLa Whole cell lysates; Antibody Dilution:
1.0 ug/ml