

Product datasheet for **TA335521**

CWF19L1 Rabbit Polyclonal Antibody

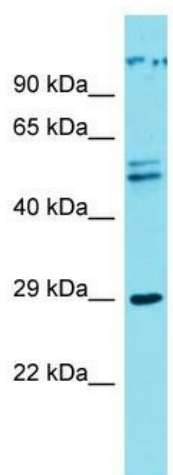
Product data:

Product Type:	Primary Antibodies
Applications:	WB
Recommended Dilution:	WB
Reactivity:	Human
Host:	Rabbit
Isotype:	IgG
Clonality:	Polyclonal
Immunogen:	The immunogen for Anti-CWF19L1 Antibody is: synthetic peptide directed towards the C-terminal region of Human CWF19L1. Synthetic peptide located within the following region: FPLQFGREVLASEAILNVPDKSDWRQCQISKEDEETLARRFRKDFEPYDF
Formulation:	Liquid. Purified antibody supplied in 1x PBS buffer with 0.09% (w/v) sodium azide and 2% sucrose.
Purification:	Affinity Purified
Conjugation:	Unconjugated
Storage:	Store at -20°C as received.
Stability:	Stable for 12 months from date of receipt.
Predicted Protein Size:	26 kDa
Gene Name:	CWF19-like 1, cell cycle control (S. pombe)
Database Link:	NP_060764 Entrez Gene 55280 Human Q69YN2
Background:	The function of this protein remains unknown.
Synonyms:	C19L1; hDrn1; SCAR17
Note:	Immunogen Sequence Homology: Human: 100%; Pig: 93%; Horse: 86%; Bovine: 86%; Rabbit: 86%; Guinea pig: 86%; Dog: 79%; Rat: 79%



[View online »](#)

Product images:



Host: Rabbit
Target Name: CWF19L1
Sample Tissue: U937 Cell Lysate
Antibody Dilution: 1.0µg/ml

Host: Rabbit; Target Name: CWF19L1; Sample
Tissue: U937 Whole cell lysates; Antibody
Dilution: 1.0 ug/ml