

## Product datasheet for **TA335519**

### **C1orf103 (LRIF1) Rabbit Polyclonal Antibody**

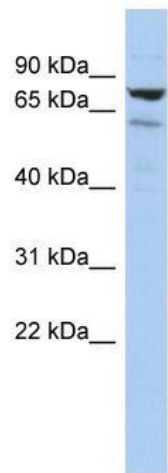
#### **Product data:**

Product Type:	Primary Antibodies
Applications:	WB
Recommended Dilution:	WB
Reactivity:	Human
Host:	Rabbit
Isotype:	IgG
Clonality:	Polyclonal
Immunogen:	The immunogen for Anti-C1orf103 Antibody: synthetic peptide directed towards the middle region of human C1orf103. Synthetic peptide located within the following region: SHSKTRQEKRTEMEYYTHEKQKGLNSNAAAYEQSHFFNKNYTEDIFPVT
Formulation:	Liquid. Purified antibody supplied in 1x PBS buffer with 0.09% (w/v) sodium azide and 2% sucrose. <i>Note that this product is shipped as lyophilized powder to China customers.</i>
Purification:	Affinity Purified
Conjugation:	Unconjugated
Storage:	Store at -20°C as received.
Stability:	Stable for 12 months from date of receipt.
Predicted Protein Size:	85 kDa
Gene Name:	ligand dependent nuclear receptor interacting factor 1
Database Link:	<a href="#">NP_060842</a> <a href="#">Entrez Gene 55791 Human</a> <a href="#">Q5T3J3</a>
Background:	The specific function of this protein remains unknown.
Synonyms:	C1orf103; RIF1
Note:	Immunogen Sequence Homology: Human: 100%; Rat: 91%; Horse: 91%; Mouse: 91%; Dog: 79%; Rabbit: 77%
Protein Families:	Stem cell - Pluripotency

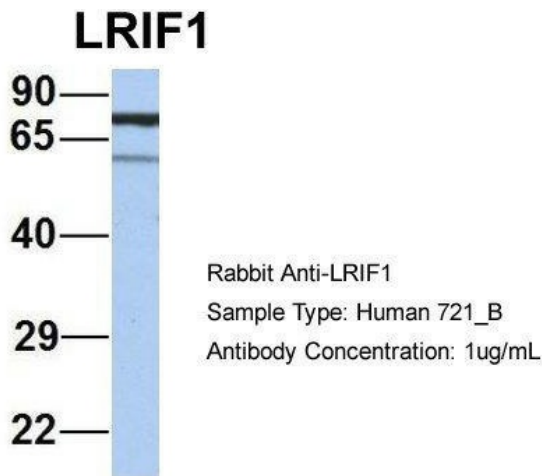


[View online »](#)

**Product images:**



WB Suggested Anti-C1orf103 Antibody Titration: 0.2-1 ug/ml; ELISA Titer: 1:62500; Positive Control: HepG2 cell lysate. LRIF1 is supported by BioGPS gene expression data to be expressed in HepG2



Host: Rabbit; Target Name: LRIF1; Sample Tissue: Human 721\_B; Antibody Dilution: 1.0 ug/ml; LRIF1 is supported by BioGPS gene expression data to be expressed in 721\_B