

Product datasheet for **TA335515**

PPP2R2D Rabbit Polyclonal Antibody

Product data:

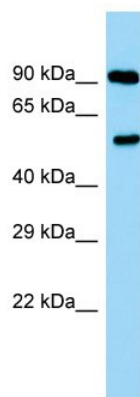
Product Type:	Primary Antibodies
Applications:	WB
Recommended Dilution:	WB
Reactivity:	Rat
Host:	Rabbit
Isotype:	IgG
Clonality:	Polyclonal
Immunogen:	The immunogen for Anti-Ppp2r2a Antibody is: synthetic peptide directed towards the C-terminal region of Rat Ppp2r2a. Synthetic peptide located within the following region: ASRENNKPRTVLKPRKVCASGKRKKDEISVDSLDFNKKILHTAWHPKENI
Formulation:	Liquid. Purified antibody supplied in 1x PBS buffer with 0.09% (w/v) sodium azide and 2% sucrose. <i>Note that this product is shipped as lyophilized powder to China customers.</i>
Purification:	Affinity Purified
Conjugation:	Unconjugated
Storage:	Store at -20°C as received.
Stability:	Stable for 12 months from date of receipt.
Predicted Protein Size:	49 kDa
Gene Name:	protein phosphatase 2 regulatory subunit Bdelta
Database Link:	NP_060931 Entrez Gene 55844 Human Q66LE6
Background:	Human homolog forms a complex with cyclin G2 that may inhibit cell cycle progression.
Synonyms:	MDS026
Note:	Immunogen Sequence Homology: Dog: 100%; Pig: 100%; Rat: 100%; Horse: 100%; Human: 100%; Mouse: 100%; Bovine: 100%; Rabbit: 100%; Zebrafish: 100%; Guinea pig: 100%
Protein Families:	Druggable Genome, Phosphatase



[View online »](#)

Protein Pathways: Tight junction

Product images:



Host: Rabbit; Target Name: Ppp2r2a; Sample
Tissue: Rat Testis lysates; Antibody Dilution:
1.0ug/ml