

Product datasheet for TA335512

TCPII Rabbit Polyclonal Antibody

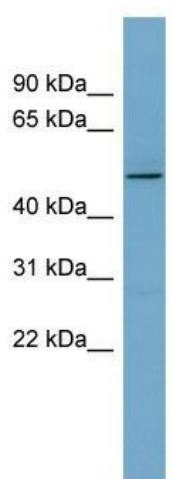
Product data:

| | |
|--------------------------------|--|
| Product Type: | Primary Antibodies |
| Applications: | WB |
| Recommended Dilution: | WB |
| Reactivity: | Human |
| Host: | Rabbit |
| Isotype: | IgG |
| Clonality: | Polyclonal |
| Immunogen: | The immunogen for Anti-TCPII Antibody: synthetic peptide directed towards the middle region of human TCPII. Synthetic peptide located within the following region: CVCSVIDQRIHLFLKCCLVLGVQRSLLDLPGGTLIEAELGQKFVNL |
| Formulation: | Liquid. Purified antibody supplied in 1x PBS buffer with 0.09% (w/v) sodium azide and 2% sucrose. |
| Purification: | Affinity Purified |
| Conjugation: | Unconjugated |
| Storage: | Store at -20°C as received. |
| Stability: | Stable for 12 months from date of receipt. |
| Predicted Protein Size: | 49 kDa |
| Gene Name: | t-complex 11 |
| Database Link: | NP_061149 Entrez Gene 6954 Human Q8WWU5 |
| Background: | TCPII may play an important role in sperm function and fertility. |
| Synonyms: | D6S230E; FPPR |



Note: Immunogen Sequence Homology: Dog: 100%; Pig: 100%; Rat: 100%; Horse: 100%; Human: 100%; Mouse: 100%; Bovine: 100%; Rabbit: 100%; Guinea pig: 93%

Product images:



WB Suggested Anti-TCP11 Antibody Titration:
0.2-1 ug/ml; ELISA Titer: 1: 312500; Positive
Control: Human Small Intestine