

## Product datasheet for **TA335510**

### RETREG1 Rabbit Polyclonal Antibody

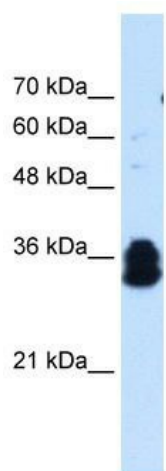
#### Product data:

Product Type:	Primary Antibodies
Applications:	IHC, WB
Recommended Dilution:	WB, IHC
Reactivity:	Human
Host:	Rabbit
Isotype:	IgG
Clonality:	Polyclonal
Immunogen:	The immunogen for Anti-FAM134B Antibody: synthetic peptide directed towards the middle region of human FAM134B. Synthetic peptide located within the following region: LSVSDTDVSEVSWTDNGTFNLSEGYTPQTDTSDDLDRPSEEVFSRDLSDF
Formulation:	Liquid. Purified antibody supplied in 1x PBS buffer with 0.09% (w/v) sodium azide and 2% sucrose. <i>Note that this product is shipped as lyophilized powder to China customers.</i>
Purification:	Protein A purified
Conjugation:	Unconjugated
Storage:	Store at -20°C as received.
Stability:	Stable for 12 months from date of receipt.
Predicted Protein Size:	39 kDa
Gene Name:	family with sequence similarity 134 member B
Database Link:	<a href="#">NP_061873</a> <a href="#">Entrez Gene 54463 Human</a> <a href="#">Q9H6L5</a>
Background:	The function remains unknown.
Synonyms:	JK-1; JK1
Note:	Immunogen Sequence Homology: Dog: 100%; Pig: 100%; Rat: 100%; Horse: 100%; Human: 100%; Mouse: 100%; Bovine: 100%; Rabbit: 100%; Guinea pig: 100%
Protein Families:	Transmembrane

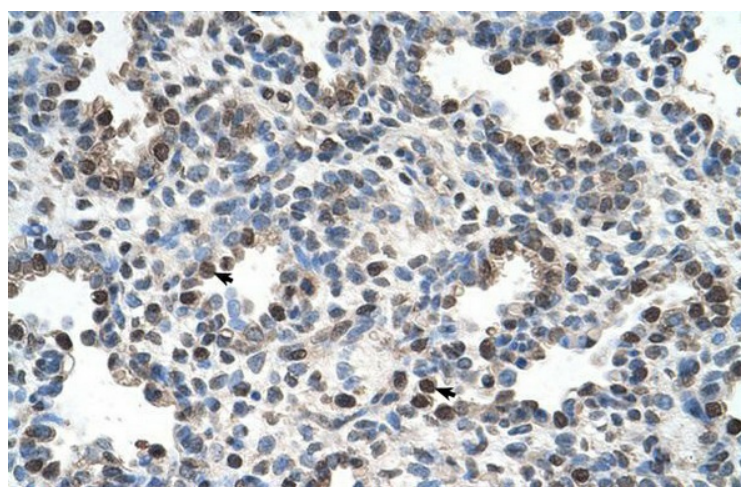


[View online »](#)

## Product images:



WB Suggested Anti-FAM134B Antibody Titration: 0.625 ug/ml; Positive Control: Jurkat cell lysate; FAM134B is supported by BioGPS gene expression data to be expressed in Jurkat



Human Lung