

Product datasheet for **TA335509**

ZA20D3 (ZFAND6) Rabbit Polyclonal Antibody

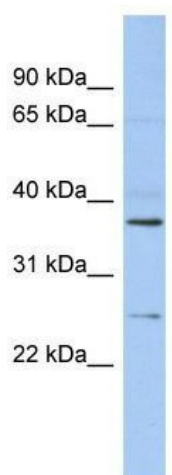
Product data:

| | |
|-------------------------|---|
| Product Type: | Primary Antibodies |
| Applications: | WB |
| Recommended Dilution: | WB |
| Reactivity: | Human |
| Host: | Rabbit |
| Isotype: | IgG |
| Clonality: | Polyclonal |
| Immunogen: | The immunogen for Anti-ZFAND6 Antibody: synthetic peptide directed towards the middle region of human ZFAND6. Synthetic peptide located within the following region: LTGFECRCGNVYCGVHRYSDVHNCSYNYKADAAEKIRKENPVVWGEKIQK |
| Formulation: | Liquid. Purified antibody supplied in 1x PBS buffer with 0.09% (w/v) sodium azide and 2% sucrose. <i>Note that this product is shipped as lyophilized powder to China customers.</i> |
| Purification: | Affinity Purified |
| Conjugation: | Unconjugated |
| Storage: | Store at -20°C as received. |
| Stability: | Stable for 12 months from date of receipt. |
| Predicted Protein Size: | 22 kDa |
| Gene Name: | zinc finger AN1-type containing 6 |
| Database Link: | NP_061879 Entrez Gene 54469 Human Q6FIF0 |
| Background: | The specific function of this protein remains unknown. |
| Synonyms: | AWP1; ZA20D3; ZFAND5B |
| Note: | Immunogen Sequence Homology: Dog: 100%; Pig: 100%; Rat: 100%; Horse: 100%; Human: 100%; Mouse: 100%; Bovine: 100%; Rabbit: 100%; Guinea pig: 100%; Zebrafish: 87% |



[View online »](#)

Product images:



WB Suggested Anti-ZFAND6 Antibody Titration:
0.2-1 ug/ml; ELISA Titer: 1:62500; Positive Control:
Human Stomach