

Product datasheet for **TA335508**

ZA20D3 (ZFAND6) Rabbit Polyclonal Antibody

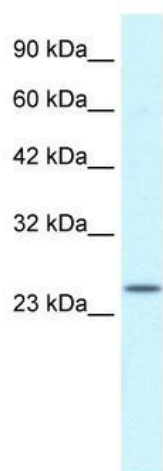
Product data:

Product Type:	Primary Antibodies
Applications:	IHC, WB
Recommended Dilution:	WB, IHC
Reactivity:	Human
Host:	Rabbit
Isotype:	IgG
Clonality:	Polyclonal
Immunogen:	The immunogen for Anti-ZA20D3 Antibody: synthetic peptide directed towards the middle region of human ZA20D3. Synthetic peptide located within the following region: SDTAQQPSEEQSKSLEKPKQKKNRCFMCRKKVGLTGFECRCGNVYCGVHR
Formulation:	Liquid. Purified antibody supplied in 1x PBS buffer with 0.09% (w/v) sodium azide and 2% sucrose. <i>Note that this product is shipped as lyophilized powder to China customers.</i>
Purification:	Protein A purified
Conjugation:	Unconjugated
Storage:	Store at -20°C as received.
Stability:	Stable for 12 months from date of receipt.
Predicted Protein Size:	23 kDa
Gene Name:	zinc finger AN1-type containing 6
Database Link:	NP_061879 Entrez Gene 54469 Human Q6FIF0
Background:	ZA20D3 is a zinc-finger protein located on chromosome 15.
Synonyms:	AWP1; ZA20D3; ZFAND5B
Note:	Immunogen Sequence Homology: Dog: 100%; Pig: 100%; Rat: 100%; Human: 100%; Mouse: 100%; Bovine: 100%; Horse: 93%; Rabbit: 93%; Guinea pig: 93%

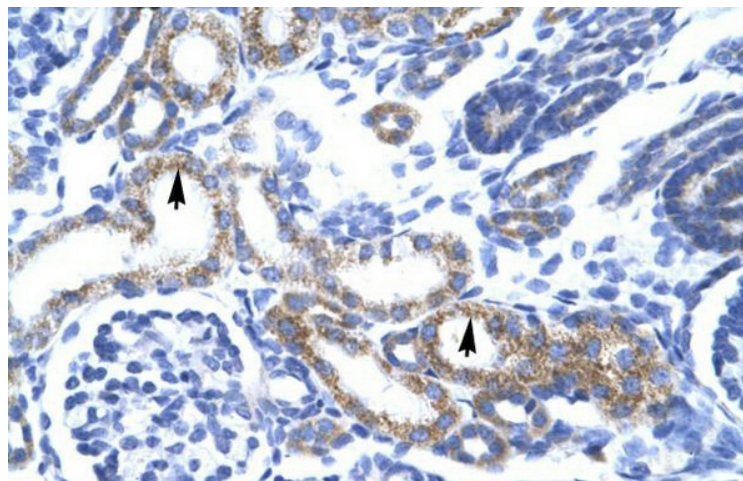


[View online »](#)

Product images:



WB Suggested Anti-ZA20D3 Antibody Titration: 2.5 ug/ml; ELISA Titer: 1:62500; Positive Control: Jurkat cell lysate. ZFAND6 is supported by BioGPS gene expression data to be expressed in Jurkat



Human kidney