

Product datasheet for **TA335507**

ARMCX6 Rabbit Polyclonal Antibody

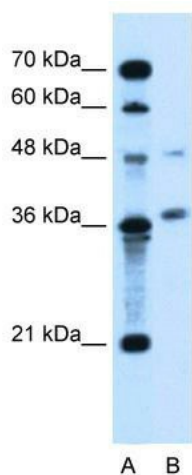
Product data:

Product Type:	Primary Antibodies
Applications:	IHC, WB
Recommended Dilution:	WB, IHC
Reactivity:	Human
Host:	Rabbit
Isotype:	IgG
Clonality:	Polyclonal
Immunogen:	The immunogen for Anti-ARMCX6 Antibody: synthetic peptide directed towards the N terminal of human ARM CX6. Synthetic peptide located within the following region: TMARPWTEGDWTEPGAPGGTEDRPSGGKANRAHPIKQRPFPYEHNKNTW
Formulation:	Liquid. Purified antibody supplied in 1x PBS buffer with 0.09% (w/v) sodium azide and 2% sucrose. <i>Note that this product is shipped as lyophilized powder to China customers.</i>
Purification:	Protein A purified
Conjugation:	Unconjugated
Storage:	Store at -20°C as received.
Stability:	Stable for 12 months from date of receipt.
Predicted Protein Size:	33 kDa
Gene Name:	armadillo repeat containing, X-linked 6
Database Link:	NP_061880 Entrez Gene 54470 Human Q7L4S7
Background:	The function remains unknown.
Synonyms:	GASP10
Note:	Immunogen Sequence Homology: Human: 100%; Mouse: 100%; Pig: 93%; Rat: 93%; Guinea pig: 93%; Horse: 86%; Dog: 79%
Protein Families:	Transmembrane

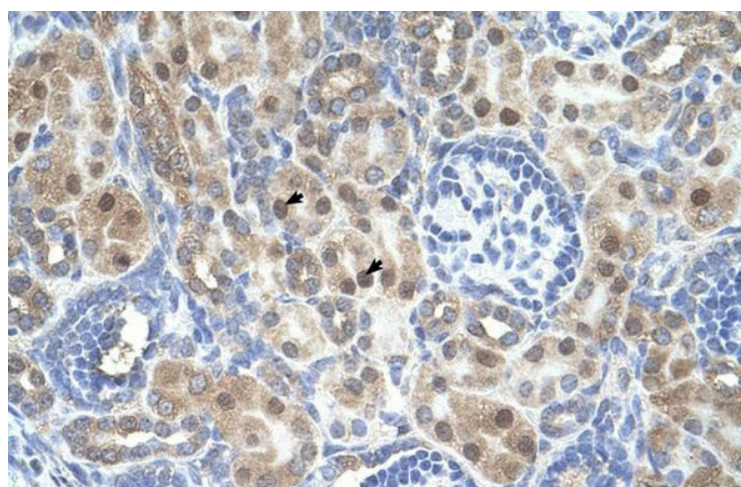


[View online »](#)

Product images:



WB Suggested Anti-ARMCX6 Antibody Titration: 5.0 ug/ml; Positive Control: Jurkat cell lysate



Human kidney