

Product datasheet for **TA335506**

SPATA6 Rabbit Polyclonal Antibody

Product data:

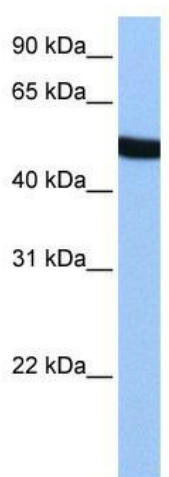
Product Type:	Primary Antibodies
Applications:	WB
Recommended Dilution:	WB
Reactivity:	Human
Host:	Rabbit
Isotype:	IgG
Clonality:	Polyclonal
Immunogen:	The immunogen for Anti-SPATA6 Antibody: synthetic peptide directed towards the middle region of human SPATA6. Synthetic peptide located within the following region: SQKKKSKSPERSKYCINAKNYEQPTISSKSHSPSPYTKRRMCELSESTRR
Formulation:	Liquid. Purified antibody supplied in 1x PBS buffer with 0.09% (w/v) sodium azide and 2% sucrose. <i>Note that this product is shipped as lyophilized powder to China customers.</i>
Purification:	Affinity Purified
Conjugation:	Unconjugated
Storage:	Store at -20°C as received.
Stability:	Stable for 12 months from date of receipt.
Predicted Protein Size:	54 kDa
Gene Name:	spermatogenesis associated 6
Database Link:	NP_061946 Entrez Gene 54558 Human Q9NWH7
Background:	SPATA6 belongs to the SPATA6 family. SPATA6 may play a role in spermatid maturation or sperm function.
Synonyms:	HASH; SRF-1; SRF1
Note:	Immunogen Sequence Homology: Dog: 100%; Pig: 100%; Rat: 100%; Horse: 100%; Human: 100%; Mouse: 100%; Bovine: 100%; Rabbit: 100%; Guinea pig: 100%



[View online »](#)

Protein Families: Secreted Protein

Product images:



WB Suggested Anti-SPATA6 Antibody Titration:
0.2-1 ug/ml; Positive Control: HepG2 cell lysate