

Product datasheet for **TA335503**

DUS3L Rabbit Polyclonal Antibody

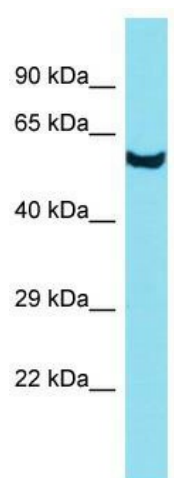
Product data:

Product Type:	Primary Antibodies
Applications:	WB
Recommended Dilution:	WB
Reactivity:	Human
Host:	Rabbit
Isotype:	IgG
Clonality:	Polyclonal
Immunogen:	The immunogen for Anti-DUS3L Antibody is: synthetic peptide directed towards the N-terminal region of Human DUS3L. Synthetic peptide located within the following region: GQTEEAEPGEQLQTQKRARGQNKGRPHVKPTNYDKNRLCPSLIQESAAK
Formulation:	Liquid. Purified antibody supplied in 1x PBS buffer with 0.09% (w/v) sodium azide and 2% sucrose.
Purification:	Affinity Purified
Conjugation:	Unconjugated
Storage:	Store at -20°C as received.
Stability:	Stable for 12 months from date of receipt.
Predicted Protein Size:	53 kDa
Gene Name:	dihydrouridine synthase 3 like
Database Link:	NP_064560 Entrez Gene 56931 Human Q96G46
Background:	DUS3L catalyzes the synthesis of dihydrouridine, a modified base found in the D-loop of most tRNAs.
Synonyms:	DUS3
Note:	Immunogen Sequence Homology: Dog: 100%; Horse: 100%; Human: 100%; Pig: 92%; Rat: 92%; Mouse: 92%; Bovine: 92%; Guinea pig: 92%



[View online »](#)

Product images:



Host: Rabbit; Target Name: DUS3L; Sample Tissue: PANC1 Whole Cell lysates; Antibody Dilution: 1.0 ug/ml