

## Product datasheet for **TA335502**

### DUS3L Rabbit Polyclonal Antibody

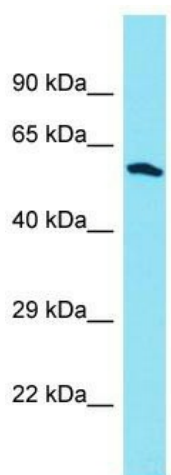
#### Product data:

Product Type:	Primary Antibodies
Applications:	WB
Recommended Dilution:	WB
Reactivity:	Human
Host:	Rabbit
Isotype:	IgG
Clonality:	Polyclonal
Immunogen:	The immunogen for Anti-DUS3L Antibody is: synthetic peptide directed towards the N-terminal region of Human DUS3L. Synthetic peptide located within the following region: FLEAKGQEKTCRETEVGDPAAGNELAEPEAKRIRLEDGQTADGQTEEAEP
Formulation:	Liquid. Purified antibody supplied in 1x PBS buffer with 0.09% (w/v) sodium azide and 2% sucrose. <i>Note that this product is shipped as lyophilized powder to China customers.</i>
Purification:	Affinity Purified
Conjugation:	Unconjugated
Storage:	Store at -20°C as received.
Stability:	Stable for 12 months from date of receipt.
Predicted Protein Size:	53 kDa
Gene Name:	dihydrouridine synthase 3 like
Database Link:	<a href="#">NP_064560</a> <a href="#">Entrez Gene 56931 Human</a> <a href="#">Q96G46</a>
Background:	DUS3L catalyzes the synthesis of dihydrouridine, a modified base found in the D-loop of most tRNAs.
Synonyms:	DUS3
Note:	Immunogen Sequence Homology: Human: 100%; Horse: 85%



[View online »](#)

## Product images:



Host: Rabbit

Target Name: DUS3L

Sample Tissue: OVCAR-3 Cell Lysate

Antibody Dilution: 1.0 µg/ml

Host: Rabbit; Target Name: DUS3L; Sample Tissue: OVCAR-3 Whole Cell lysates; Antibody Dilution: 1.0 ug/ml