

Product datasheet for **TA335501**

Carbonic anhydrase X (CA10) Rabbit Polyclonal Antibody

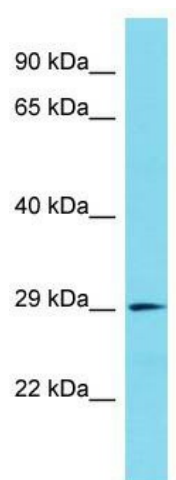
Product data:

Product Type:	Primary Antibodies
Applications:	WB
Recommended Dilution:	WB
Reactivity:	Human
Host:	Rabbit
Isotype:	IgG
Clonality:	Polyclonal
Immunogen:	The immunogen for Anti-CA10 Antibody is: synthetic peptide directed towards the N-terminal region of Human CA10. Synthetic peptide located within the following region: NISGGPMTYSHRLEEIRLHFGSEDSQGSEHLLNGQAFSGEVQLIHYNHEL
Formulation:	Liquid. Purified antibody supplied in 1x PBS buffer with 0.09% (w/v) sodium azide and 2% sucrose. <i>Note that this product is shipped as lyophilized powder to China customers.</i>
Purification:	Affinity Purified
Conjugation:	Unconjugated
Storage:	Store at -20°C as received.
Stability:	Stable for 12 months from date of receipt.
Predicted Protein Size:	27 kDa
Gene Name:	carbonic anhydrase 10
Database Link:	NP_064563 Entrez Gene 56934 Human Q9NS85
Background:	The function of this protein remains unknown.
Synonyms:	CA-RPX; CARPX; HUCEP-15
Note:	Immunogen Sequence Homology: Dog: 100%; Pig: 100%; Rat: 100%; Horse: 100%; Human: 100%; Mouse: 100%; Bovine: 100%; Rabbit: 100%; Guinea pig: 100%; Zebrafish: 93%
Protein Families:	Druggable Genome



[View online »](#)

Product images:



Host: Rabbit; Target Name: CA10; Sample Tissue: Esophagus Tumor lysates; Antibody Dilution: 1.0 ug/ml