

## Product datasheet for **TA335500**

### Fascin 3 (FSCN3) Rabbit Polyclonal Antibody

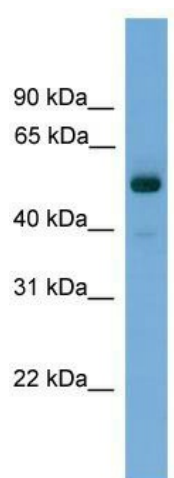
#### Product data:

Product Type:	Primary Antibodies
Applications:	WB
Recommended Dilution:	WB
Reactivity:	Human
Host:	Rabbit
Isotype:	IgG
Clonality:	Polyclonal
Immunogen:	The immunogen for Anti-FSCN3 Antibody: synthetic peptide directed towards the middle region of human FSCN3. Synthetic peptide located within the following region: WGKFALNFCIELQGSNLLTVLAPNGFYMRADQSGTLLADSEDTRECIWE
Formulation:	Liquid. Purified antibody supplied in 1x PBS buffer with 0.09% (w/v) sodium azide and 2% sucrose.
Purification:	Affinity Purified
Conjugation:	Unconjugated
Storage:	Store at -20°C as received.
Stability:	Stable for 12 months from date of receipt.
Predicted Protein Size:	55 kDa
Gene Name:	fascin actin-bundling protein 3
Database Link:	<a href="#">NP_065102</a> <a href="#">Entrez Gene 29999 Human</a> <a href="#">Q9NQT6</a>
Background:	FSCN3 acts as an actin bundling protein.
Synonyms:	actin-bundling protein; fascin (testis); fascin 3; fascin homolog 3; OTTMUSP00000023543; testicular (Strongylocentrotus purpuratus)
Note:	Immunogen Sequence Homology: Human: 100%; Pig: 93%; Horse: 93%; Bovine: 93%; Rabbit: 93%; Guinea pig: 93%; Dog: 86%; Rat: 86%; Mouse: 86%



[View online »](#)

## Product images:



WB Suggested Anti-FSCN3 Antibody Titration: 0.2-1 ug/ml; ELISA Titer: 1: 312500; Positive Control: Human Muscle