

Product datasheet for **TA335499**

Fascin 3 (FSCN3) Rabbit Polyclonal Antibody

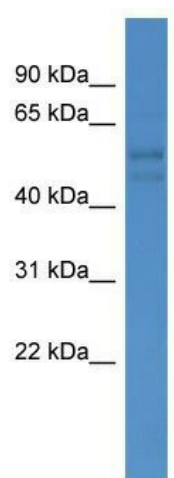
Product data:

Product Type:	Primary Antibodies
Applications:	WB
Recommended Dilution:	WB
Reactivity:	Human
Host:	Rabbit
Isotype:	IgG
Clonality:	Polyclonal
Immunogen:	The immunogen for Anti-FSCN3 Antibody: synthetic peptide directed towards the C terminal of human FSCN3. Synthetic peptide located within the following region: YDGEVRAASERLNRMSLFQFECDSESPTVQLRSANGYYLSQRRHRAVMAD
Formulation:	Liquid. Purified antibody supplied in 1x PBS buffer with 0.09% (w/v) sodium azide and 2% sucrose.
Purification:	Affinity Purified
Conjugation:	Unconjugated
Storage:	Store at -20°C as received.
Stability:	Stable for 12 months from date of receipt.
Predicted Protein Size:	55 kDa
Gene Name:	fascin actin-bundling protein 3
Database Link:	NP_065102 Entrez Gene 29999 Human Q9NQT6
Background:	FSCN3 acts as an actin bundling protein.
Synonyms:	actin-bundling protein; fascin (testis); fascin 3; fascin homolog 3; OTTMUSP00000023543; testicular (Strongylocentrotus purpuratus)
Note:	Immunogen Sequence Homology: Human: 100%; Rabbit: 93%; Mouse: 86%; Pig: 79%; Rat: 79%; Bovine: 79%



[View online »](#)

Product images:



WB Suggested Anti-FSCN3 Antibody Titration: 0.2-1 ug/ml; ELISA Titer: 1: 62500; Positive Control: MCF7 cell lysate