

Product datasheet for **TA335498**

LYZL6 Rabbit Polyclonal Antibody

Product data:

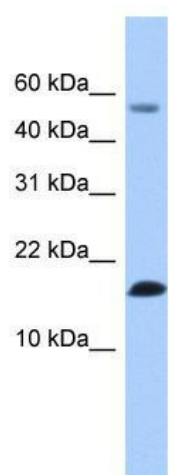
Product Type:	Primary Antibodies
Applications:	WB
Recommended Dilution:	WB
Reactivity:	Human
Host:	Rabbit
Isotype:	IgG
Clonality:	Polyclonal
Immunogen:	The immunogen for Anti-LYZL6 Antibody: synthetic peptide directed towards the N terminal of human LYZL6. Synthetic peptide located within the following region: MTKALLIYLVSSFLALNQASLISRCDLAQVLQLEDLDGFEGYSLSDWLCL
Formulation:	Liquid. Purified antibody supplied in 1x PBS buffer with 0.09% (w/v) sodium azide and 2% sucrose. <i>Note that this product is shipped as lyophilized powder to China customers.</i>
Purification:	Affinity Purified
Conjugation:	Unconjugated
Storage:	Store at -20°C as received.
Stability:	Stable for 12 months from date of receipt.
Predicted Protein Size:	16 kDa
Gene Name:	lysozyme like 6
Database Link:	NP_065159 Entrez Gene 57151 Human O75951
Background:	LYZL6 belongs to the glycosyl hydrolase 22 family. The exact function of LYZL6 remains unknown.
Synonyms:	LYC1; PRO1485; TKAL754; UNQ754
Note:	Immunogen Sequence Homology: Dog: 100%; Pig: 100%; Rat: 100%; Horse: 100%; Human: 100%; Mouse: 100%; Bovine: 100%; Guinea pig: 92%; Rabbit: 75%



[View online »](#)

Protein Families: Secreted Protein

Product images:



WB Suggested Anti-LYZL6 Antibody Titration: 0.2-1 ug/ml; Positive Control: Human Lung