

## Product datasheet for **TA335497**

### TTYH1 Rabbit Polyclonal Antibody

#### Product data:

Product Type:	Primary Antibodies
Applications:	WB
Recommended Dilution:	WB
Reactivity:	Human
Host:	Rabbit
Isotype:	IgG
Clonality:	Polyclonal
Immunogen:	The immunogen for Anti-TTYH1 Antibody: synthetic peptide directed towards the N terminal of human TTYH1. Synthetic peptide located within the following region: GAPPGYRPSAWVHLLHQLPRADFQLRPVPSVFAPQEYQQALLVAALA
Formulation:	Liquid. Purified antibody supplied in 1x PBS buffer with 0.09% (w/v) sodium azide and 2% sucrose.
Purification:	Affinity Purified
Conjugation:	Unconjugated
Storage:	Store at -20°C as received.
Stability:	Stable for 12 months from date of receipt.
Predicted Protein Size:	49 kDa
Gene Name:	tweety family member 1
Database Link:	<a href="#">NP_065710</a> <a href="#">Entrez Gene 57348 Human</a> <a href="#">Q9H313</a>
Background:	TTYH1 is a member of the tweety family of proteins. Members of this family function as chloride anion channels. TTYH1 functions as a calcium (2+)-independent, volume-sensitive large conductance chloride (-) channel. This gene encodes a member of the tweety family of proteins. Members of this family function as chloride anion channels. The encoded protein functions as a calcium(2+)-independent, volume-sensitive large conductance chloride(-) channel. Two transcript variants encoding distinct isoforms have been identified for this gene.



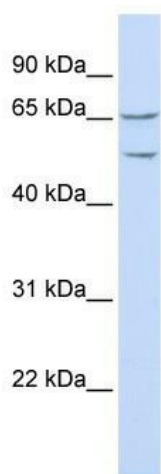
[View online »](#)

**Synonyms:** 4930459B04Rik; 6330408P11Rik; OTTMUSP00000024583; tty; tweety 1; tweety homolog 1 (Drosophila)

**Note:** Immunogen Sequence Homology: Dog: 100%; Pig: 100%; Rat: 100%; Human: 100%; Mouse: 100%; Bovine: 100%; Rabbit: 100%; Guinea pig: 100%

**Protein Families:** Ion Channels: Other, Transmembrane

### Product images:



WB Suggested Anti-TTYH1 Antibody Titration: 0.2-1 ug/ml; ELISA Titer: 1: 1562500; Positive Control: Hela cell lysate