

Product datasheet for **TA335496**

KLHL1 Rabbit Polyclonal Antibody

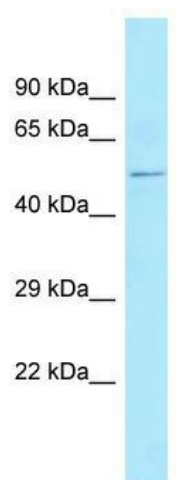
Product data:

Product Type:	Primary Antibodies
Applications:	WB
Recommended Dilution:	WB
Reactivity:	Rat
Host:	Rabbit
Isotype:	IgG
Clonality:	Polyclonal
Immunogen:	The immunogen for Anti-Klhl1 Antibody is: synthetic peptide directed towards the N-terminal region of Rat Klhl1. Synthetic peptide located within the following region: KPSSSTSSSSSSASSSPFSPLNGLLPVATRLQQGAPGQGTQQPARTL
Formulation:	Liquid. Purified antibody supplied in 1x PBS buffer with 0.09% (w/v) sodium azide and 2% sucrose. <i>Note that this product is shipped as lyophilized powder to China customers.</i>
Purification:	Affinity Purified
Conjugation:	Unconjugated
Storage:	Store at -20°C as received.
Stability:	Stable for 12 months from date of receipt.
Predicted Protein Size:	54 kDa
Gene Name:	kelch like family member 1
Database Link:	NP_065917 Entrez Gene 290426 Rat Q9NR64
Background:	The function of this protein remains unknown.
Synonyms:	MRP2
Note:	Immunogen Sequence Homology: Rat: 100%; Human: 100%; Mouse: 100%; Rabbit: 100%; Pig: 93%; Horse: 93%; Bovine: 79%



[View online »](#)

Product images:



Host: Rabbit; Target Name: Klhl1; Sample Tissue: Rat Stomach lysates; Antibody Dilution: 1.0 ug/ml