

Product datasheet for **TA335493**

FAM108C1 (ABHD17C) Rabbit Polyclonal Antibody

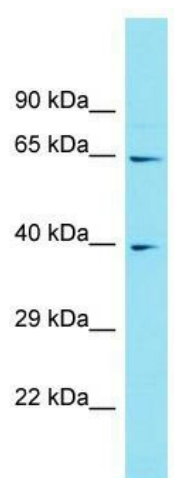
Product data:

| | |
|-------------------------|--|
| Product Type: | Primary Antibodies |
| Applications: | WB |
| Recommended Dilution: | WB |
| Reactivity: | Human |
| Host: | Rabbit |
| Isotype: | IgG |
| Clonality: | Polyclonal |
| Immunogen: | The immunogen for Anti-FAM108C1 Antibody is: synthetic peptide directed towards the middle region of Human FAM108C1. Synthetic peptide located within the following region: GSRINCNIFSYDYSYGVSSGKPKSEKNLYADIDAAWQALRTRYGVSPENI |
| Formulation: | Liquid. Purified antibody supplied in 1x PBS buffer with 0.09% (w/v) sodium azide and 2% sucrose. <i>Note that this product is shipped as lyophilized powder to China customers.</i> |
| Purification: | Affinity Purified |
| Conjugation: | Unconjugated |
| Storage: | Store at -20°C as received. |
| Stability: | Stable for 12 months from date of receipt. |
| Predicted Protein Size: | 36 kDa |
| Gene Name: | abhydrolase domain containing 17C |
| Database Link: | NP_067037 Entrez Gene 58489 Human Q6PCB6 |
| Background: | The function of this protein remains unknown. |
| Synonyms: | FAM108C1 |
| Note: | Immunogen Sequence Homology: Dog: 100%; Pig: 100%; Rat: 100%; Human: 100%; Mouse: 100%; Bovine: 100%; Zebrafish: 93%; Guinea pig: 93%; Horse: 86%; Rabbit: 86% |
| Protein Families: | Protease |



[View online »](#)

Product images:



Host: Rabbit; Target Name: FAM108C1; Sample
Tissue: 293T Whole Cell lysates; Antibody
Dilution: 1.0 ug/ml