

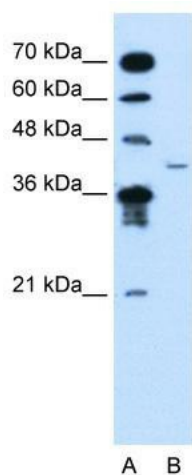
Product datasheet for TA335492

MFAP3L Rabbit Polyclonal Antibody

Product data:

| | |
|-------------------------|--|
| Product Type: | Primary Antibodies |
| Applications: | WB |
| Recommended Dilution: | WB |
| Reactivity: | Human |
| Host: | Rabbit |
| Isotype: | IgG |
| Clonality: | Polyclonal |
| Immunogen: | The immunogen for Anti-MFAP3L Antibody: synthetic peptide directed towards the N terminal of human MFAP3L. Synthetic peptide located within the following region: MHDSGLLNITKVSFSDRGKYTCVASNIYGTVNNTVTLRVIFTSGDMGVYY |
| Formulation: | Liquid. Purified antibody supplied in 1x PBS buffer with 0.09% (w/v) sodium azide and 2% sucrose. |
| Purification: | Protein A purified |
| Conjugation: | Unconjugated |
| Storage: | Store at -20°C as received. |
| Stability: | Stable for 12 months from date of receipt. |
| Predicted Protein Size: | 45 kDa |
| Gene Name: | microfibrillar associated protein 3 like |
| Database Link: | NP_067679 Entrez Gene 9848 Human O75121 |
| Background: | The function remains unknown. |
| Synonyms: | NYD-sp9 |
| Note: | Immunogen Sequence Homology: Dog: 100%; Pig: 100%; Rat: 100%; Horse: 100%; Human: 100%; Mouse: 100%; Guinea pig: 100%; Bovine: 93%; Rabbit: 93% |
| Protein Families: | Transmembrane |


[View online »](#)

Product images:


WB Suggested Anti-MFAP3L Antibody Titration:
2.5 ug/ml; Positive Control: Jurkat cell lysate