

## Product datasheet for **TA335491**

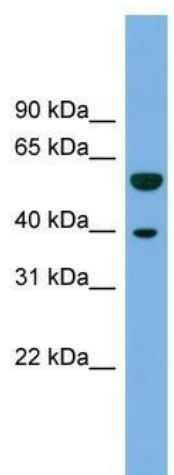
### C19orf28 (MFSD12) Rabbit Polyclonal Antibody

#### Product data:

Product Type:	Primary Antibodies
Applications:	WB
Recommended Dilution:	WB
Reactivity:	Human
Host:	Rabbit
Isotype:	IgG
Clonality:	Polyclonal
Immunogen:	The immunogen for Anti-C19orf28 Antibody: synthetic peptide directed towards the N terminal of human C19orf28. Synthetic peptide located within the following region: MGPGPPAAGAAPSPRPLSLVARLSYAVGHFLNDLCASMWFTYLLLYLHSV
Formulation:	Liquid. Purified antibody supplied in 1x PBS buffer with 0.09% (w/v) sodium azide and 2% sucrose.
Purification:	Affinity Purified
Conjugation:	Unconjugated
Storage:	Store at -20°C as received.
Stability:	Stable for 12 months from date of receipt.
Predicted Protein Size:	59 kDa
Gene Name:	major facilitator superfamily domain containing 12
Database Link:	<a href="#">NP_068377</a> <a href="#">Entrez Gene 126321 Human</a> <a href="#">Q6NUT3</a>
Background:	The function of this protein remains unknown.
Synonyms:	C19orf28; PP3501
Note:	Immunogen Sequence Homology: Human: 100%; Rabbit: 86%; Pig: 80%; Guinea pig: 80%
Protein Families:	Transmembrane



[View online »](#)

**Product images:**

WB Suggested Anti-C19orf28 Antibody Titration:  
0.2-1 ug/ml; Positive Control: THP-1 cell lysate