

## Product datasheet for **TA335487**

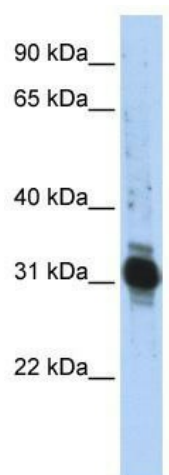
### ZFAND3 Rabbit Polyclonal Antibody

#### Product data:

Product Type:	Primary Antibodies
Applications:	WB
Recommended Dilution:	WB
Reactivity:	Human
Host:	Rabbit
Isotype:	IgG
Clonality:	Polyclonal
Immunogen:	The immunogen for Anti-ZFAND3 Antibody: synthetic peptide directed towards the middle region of human ZFAND3. Synthetic peptide located within the following region: SITTPTLSPSQQLPTELNVTPSPSKEECGPCTDTAHVSLITPTKRSCGTD
Formulation:	Liquid. Purified antibody supplied in 1x PBS buffer with 0.09% (w/v) sodium azide and 2% sucrose. <i>Note that this product is shipped as lyophilized powder to China customers.</i>
Purification:	Affinity Purified
Conjugation:	Unconjugated
Storage:	Store at -20°C as received.
Stability:	Stable for 12 months from date of receipt.
Predicted Protein Size:	25 kDa
Gene Name:	zinc finger AN1-type containing 3
Database Link:	<a href="#">NP_068762</a> <a href="#">Entrez Gene 60685 Human</a> <a href="#">Q9H8U3</a>
Background:	The exact function of this protein remains unknown.
Synonyms:	TEX27
Note:	Immunogen Sequence Homology: Dog: 100%; Pig: 100%; Rat: 100%; Horse: 100%; Human: 100%; Bovine: 100%; Guinea pig: 100%; Mouse: 93%; Rabbit: 93%



[View online »](#)

**Product images:**

WB Suggested Anti-ZFAND3 Antibody Titration:  
0.2-1 ug/ml; ELISA Titer: 1:312500; Positive  
Control: Transfected 293T