

Product datasheet for **TA335486**

ZFAND3 Rabbit Polyclonal Antibody

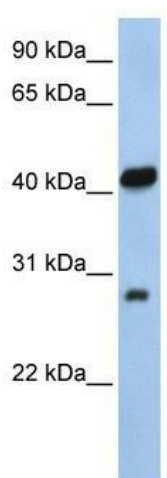
Product data:

Product Type:	Primary Antibodies
Applications:	WB
Recommended Dilution:	WB
Reactivity:	Human
Host:	Rabbit
Isotype:	IgG
Clonality:	Polyclonal
Immunogen:	The immunogen for Anti-ZFAND3 Antibody: synthetic peptide directed towards the N terminal of human ZFAND3. Synthetic peptide located within the following region: DFQKKQPDDDSAPSTSNSQSDLFSEETTSDNNNTSITPTLSPSQQLPT
Formulation:	Liquid. Purified antibody supplied in 1x PBS buffer with 0.09% (w/v) sodium azide and 2% sucrose. <i>Note that this product is shipped as lyophilized powder to China customers.</i>
Purification:	Affinity Purified
Conjugation:	Unconjugated
Storage:	Store at -20°C as received.
Stability:	Stable for 12 months from date of receipt.
Predicted Protein Size:	25 kDa
Gene Name:	zinc finger AN1-type containing 3
Database Link:	NP_068762 Entrez Gene 60685 Human Q9H8U3
Background:	ZFAND3 contains 1 A20-type zinc finger and 1 AN1-type zinc finger. The exact function of ZFAND3 remains unknown.
Synonyms:	TEX27
Note:	Immunogen Sequence Homology: Dog: 100%; Horse: 100%; Human: 100%; Rabbit: 100%; Pig: 93%; Rat: 93%; Mouse: 93%; Bovine: 93%; Guinea pig: 93%



[View online »](#)

Product images:



WB Suggested Anti-ZFAND3 Antibody Titration:
0.2-1 ug/ml; ELISA Titer: 1:312500; Positive
Control: 721_B cell lysate