

Product datasheet for **TA335484**

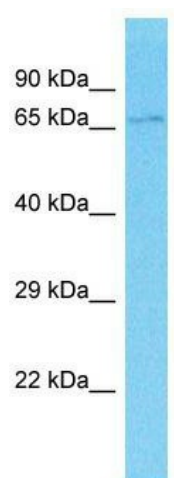
EPB41L4A Rabbit Polyclonal Antibody

Product data:

Product Type:	Primary Antibodies
Applications:	WB
Recommended Dilution:	WB
Reactivity:	Human
Host:	Rabbit
Isotype:	IgG
Clonality:	Polyclonal
Immunogen:	The immunogen for Anti-EPB41L4A Antibody is: synthetic peptide directed towards the C-terminal region of Human EPB41L4A. Synthetic peptide located within the following region: QPVRRRKAHNSGEDSDLKQRRRSRRCNTSSGSESENSNREHRKRNRI
Formulation:	Liquid. Purified antibody supplied in 1x PBS buffer with 0.09% (w/v) sodium azide and 2% sucrose. <i>Note that this product is shipped as lyophilized powder to China customers.</i>
Purification:	Affinity Purified
Conjugation:	Unconjugated
Storage:	Store at -20°C as received.
Stability:	Stable for 12 months from date of receipt.
Predicted Protein Size:	63 kDa
Gene Name:	erythrocyte membrane protein band 4.1 like 4A
Database Link:	NP_071423 Entrez Gene 64097 Human Q9HCS5
Background:	The function of this protein remains unknown.
Synonyms:	EPB41L4; NBL4
Note:	Immunogen Sequence Homology: Human: 100%; Pig: 93%; Rat: 93%; Horse: 93%; Mouse: 93%; Bovine: 93%; Zebrafish: 93%; Guinea pig: 93%; Rabbit: 86%; Dog: 79%



[View online »](#)

Product images:

Host: Rabbit; Target Name: EPB41L4A; Sample
Tissue: THP-1 Whole Cell lysates; Antibody
Dilution: 1.0 ug/ml