

Product datasheet for **TA335483**

TFB2M Rabbit Polyclonal Antibody

Product data:

Product Type:	Primary Antibodies
Applications:	IHC, WB
Recommended Dilution:	WB, IHC
Reactivity:	Human
Host:	Rabbit
Isotype:	IgG
Clonality:	Polyclonal
Immunogen:	The immunogen for Anti-TFB2M Antibody: synthetic peptide directed towards the N terminal of human TFB2M. Synthetic peptide located within the following region: ECNPGPGILTQALLEAGAKVVALES DKTFIPHLES LGKNLDGKLRVIHCD
Formulation:	Liquid. Purified antibody supplied in 1x PBS buffer with 0.09% (w/v) sodium azide and 2% sucrose. <i>Note that this product is shipped as lyophilized powder to China customers.</i>
Purification:	Protein A purified
Conjugation:	Unconjugated
Storage:	Store at -20°C as received.
Stability:	Stable for 12 months from date of receipt.
Predicted Protein Size:	45 kDa
Gene Name:	transcription factor B2, mitochondrial
Database Link:	NP_071761 Entrez Gene 64216 Human Q9H5Q4
Background:	TFB2M is a S-adenosyl-L-methionine-dependent methyltransferase which specifically dimethylates mitochondrial 12S rRNA at the conserved stem loop. It is also required for basal transcription of mitochondrial DNA, probably via its interaction with POLRMT and TFAM. It stimulates transcription independently of the methyltransferase activity. Compared to TFB1M, it activates transcription of mitochondrial DNA more efficiently, while it has less methyltransferase activity.



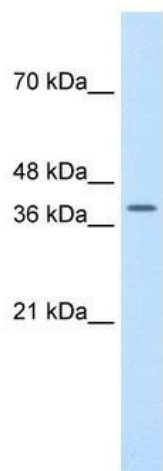
[View online »](#)

Synonyms: Hkp1; mtTFB2

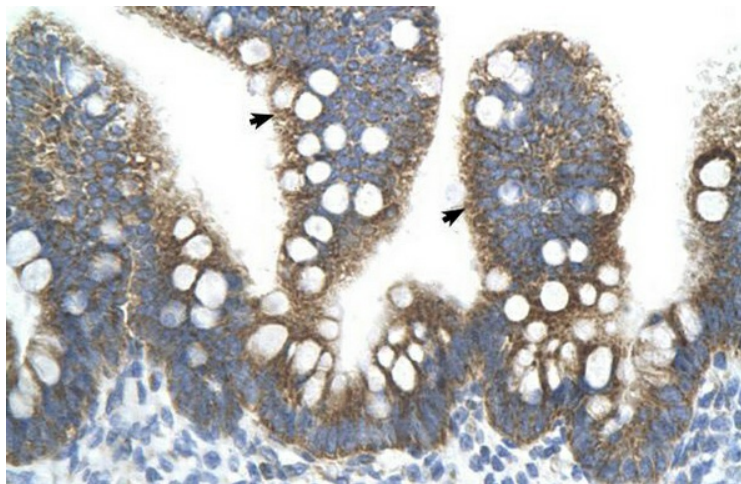
Note: Immunogen Sequence Homology: Horse: 100%; Human: 100%; Rat: 85%; Rabbit: 83%

Protein Families: Transcription Factors

Product images:



WB Suggested Anti-TFB2M Antibody Titration:
1.25 ug/ml; ELISA Titer: 1:312500; Positive
Control: Transfected 293T



Human Intestine