

## Product datasheet for **TA335480**

### **C17ORF39 (GID4) Rabbit Polyclonal Antibody**

#### **Product data:**

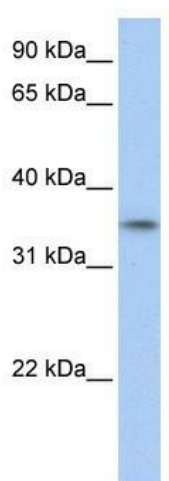
Product Type:	Primary Antibodies
Applications:	WB
Recommended Dilution:	WB
Reactivity:	Human
Host:	Rabbit
Isotype:	IgG
Clonality:	Polyclonal
Immunogen:	The immunogen for Anti-GID4Antibody: synthetic peptide directed towards the C terminal of human C17orf39. Synthetic peptide located within the following region: SFAGFYICFQKSAASIEGYYYHRSEWYQSLNLTHVPEHSAPIYEFR
Formulation:	Liquid. Purified antibody supplied in 1x PBS buffer with 0.09% (w/v) sodium azide and 2% sucrose. <i>Note that this product is shipped as lyophilized powder to China customers.</i>
Purification:	Affinity Purified
Conjugation:	Unconjugated
Storage:	Store at -20°C as received.
Stability:	Stable for 12 months from date of receipt.
Predicted Protein Size:	33 kDa
Gene Name:	GID complex subunit 4 homolog
Database Link:	<a href="#">NP_076957</a> <a href="#">Entrez Gene 79018 Human</a> <a href="#">Q8IIV7</a>
Background:	The exact function of GID4remains unknown. The multiprotein Mediator complex is a coactivator required for activation of RNA polymerase II transcription by DNA bound transcription factors. The protein encoded by this gene is thought to be a subunit of the Mediator complex. This gene is located within the Smith-Magenis syndrome region on chromosome 17.
Synonyms:	C17orf39; VID24



[View online »](#)

**Note:** Immunogen Sequence Homology: Dog: 100%; Rat: 100%; Horse: 100%; Human: 100%; Mouse: 100%; Bovine: 100%; Rabbit: 100%; Zebrafish: 100%

**Product images:**



WB Suggested Anti-GID4 Antibody Titration: 0.2-1 ug/ml; Positive Control: Human Muscle